



# Economic Summary

A MONTHLY REVIEW OF ECONOMIC ACTIVITY IN WEST VIRGINIA

February 2003

## West Virginia at a Glance

### Payroll Employment

Total nonfarm payroll employment declined 1,700 over the month of December 2002 to a level of 733,500. The goods-producing sector tumbled 1,900, led by a seasonal loss of 1,300 in construction. Both mining and manufacturing lost 300 jobs over the month. The service-producing sector added 200 jobs, where a gain of 700 in trade narrowly offset declines of 300 in government, 100 in services, and 100 in transportation and public utilities. Employment in finance, insurance and real estate was unchanged over the month.

Since December 2001, the number of payroll jobs has decreased 7,600. The goods-producing sector has lost 7,800 jobs, with substantial declines of 3,600 in manufacturing, 2,500 in mining, and 1,700 in construction. The service-producing sector has added 200 jobs, with gains of 2,600 in services, 1,300 in government, and 200 in finance, insurance and real estate narrowly offsetting declines of 2,700 in trade and 1,200 in transportation and public utilities. The gain of 1,300 jobs in government was due almost entirely to local education.

### Unemployment

The number of unemployed state residents fell 3,000 to 44,200 in December. The corresponding unemployment rate declined three-tenths of a percentage point to 5.5 percent of the civilian labor force. This rate tied that of October as the second lowest of 2002. Only September's 5.4 percent unemployment rate was lower. Total unemployment has risen 6,200 since December 2001, when the rate was 4.6 percent and 38,000 were jobless. The state's seasonally adjusted unemployment rate fell six-tenths of a percentage point to 5.6 percent, while the national rate remained at 6.0 percent. This is the first time since January 2002 that the state unemployment rate has been lower than the national rate.

### Hours and Earnings

Earnings for private sector production and nonsupervisory workers averaged \$13.23 in December, up five cents from the previous month. Hourly earnings were up 30 cents over the year. Average weekly earnings increased \$5.70 in December to \$463.05, and were up \$6.62 from the previous December. Average weekly hours were up slightly over the month, but were down over the year.

Labor Force Statistics	Prelim.	Rev.	Rev.	Change From:	
	Dec. 2002	Nov. 2002	Dec. 2001	Nov. 2002	Dec. 2001
Resident-Based Data					
Civilian Labor Force	805.5	810.1	832.8	-4.6	-27.3
Total Employment	761.3	762.9	794.8	-1.6	-33.5
Total Unemployment	44.2	47.2	38.0	-3.0	6.2
Unemployment Rate	5.5	5.8	4.6	xx	xx

### In this issue...

What's Next is NAICS .....	2
On the Web .....	4
Ask An Analyst .....	4
Occupational Profile .....	4
Nonfarm Payroll Employment	
by Industry .....	5
Average Hours and Earnings .....	7
Trends in the Labor Market .....	8
Economic Indicators .....	10
Selected National Data .....	10
Comparative State Data .....	11
County Data .....	11
WV Metropolitan Statistical Areas .....	15
Workforce Investment Areas .....	19
Bordering States Metropolitan	
Statistical Areas .....	26
Select Unemployment Compensation	
Claims Activities .....	26
Select Workers' Compensation	
Claims Activities .....	26
Bureau of Employment Programs	
Local Offices .....	27
Definitions .....	28



With the release of January 2003 data in next month's **Economic Summary**, we'll be switching from the old Standard Industrial Classification (SIC) to the new North American Industry Classification System (NAICS). This month we'll look at the changes occurring soon in the way industry data is presented.

## What's Next is NAICS

Last month we presented a general overview of the **North American Industry Classification System (NAICS)** which will be introduced in the next edition of the *Economic Summary* with January 2003 industry data. From this point, NAICS will replace the older **Standard Industrial Classification (SIC)** system in these pages, and there will be a much different look to the structure and content of the employment statistics that are presented here monthly.

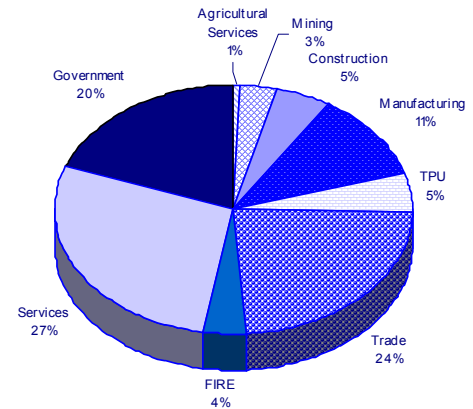
How businesses and industries are defined, classified and tabulated under NAICS is fundamentally changed from the precepts of the SIC system. NAICS uses a production-based approach to classification in contrast to the SIC's focus on end service or product. NAICS places emphasis on service, information and emerging industries, while the SIC was driven mainly by industries in the manufacturing sector.

The appearance of West Virginia's economic landscape will be altered under NAICS as illustrated by the two charts shown at the right. Chart A depicts the make-up of the state's economy by the SIC major divisions based upon 2001 average annual employment, while Chart B presents the same data by NAICS sectors.

Although the total employment in both charts is identical, the percentage distributions and component industry employment totals are different. Agricultural services under the SIC classification is absorbed into several NAICS sectors. Mining, with the addition of natural resources, registers a slight gain in employment.

Construction remains a separately identified category whether under NAICS or SIC, but under NAICS picks up government highway construction and maintenance employment (remember, entities are classified in a production-oriented capacity). Manufacturing also remains a distinct category within either classification system; however, with NAICS, publishing is removed from manufacturing and placed in a new information sector. This largely accounts for the lower level of manufacturing employment in West Virginia under

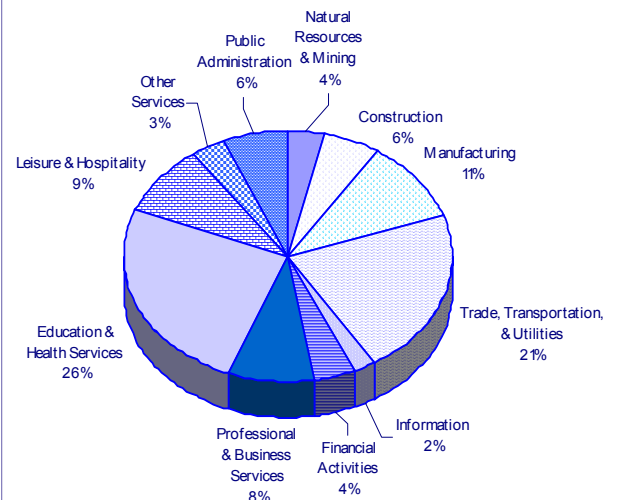
**West Virginia Annual Average 2001  
SIC Employment by Division**



Agricultural Services .....	4,300
Mining .....	22,500
Construction .....	34,200
Manufacturing .....	77,400
Transportation & Public Utilities .....	34,100
Trade .....	161,600
Finance, Insurance and Real Estate .....	26,800
Services .....	190,200
Government .....	134,000

**Chart A**

**West Virginia Annual Average 2001  
NAICS Employment by Sector**



Natural Resources & Mining .....	24,600
Construction .....	39,100
Manufacturing .....	72,200
Trade, Transportation & Utilities .....	145,700
Information .....	15,300
Financial Activities .....	28,700
Professional & Business Services .....	57,700
Education & Health Services .....	172,300
Leisure & Hospitality .....	63,500
Other Services .....	22,200
Public Administration .....	43,800

**Chart B**

Graphics: J. Doran. Numbers rounded to the thousands.  
Source: Covered Employment and Wage Program

NAICS, although there are 79 new and 186 revised manufacturing classifications within this new system.

The components of transportation and public utilities and trade, two very distinct SIC divisions, form a single NAICS category of trade, transportation and utilities. Communications, formerly classified under public utilities in the SIC, moves into the NAICS information sector, while eating and drinking places, formerly under trade, are now within the NAICS leisure and hospitality sector. Most of wholesale and retail trade remains intact under NAICS but with new descriptive definitions.

The NAICS information sector contains publishing, (newspapers, periodicals, books and others) included with manufacturing in SIC, and communications, (radio, television and cable broadcasting, telecommunications, etc.) included with public utilities in SIC. This new sector also includes a variety of other information-related activities such as software publishers, motion picture and video production and distribution, paging, cellular and wireless services, Internet service providers, data processing services, and libraries and archives.

Professional and business services combines, among others, business service providers with management functions of companies and adds professional services. Education and health services picks up educational activities such as state educational institutions and county school boards and health service providers and institutions.

The leisure and hospitality sector largely consists of lodging and eating and drinking places (formerly under retail trade), and includes along with them the former amusement and recreation category. The sector for other services is made up of the remainder of services not redistributed among the preceding sectors.

Another notable change involves government and how it is broken out by activity within the public administration sector and other NAICS sectors. Government agencies, such as the highways department, may be reclassified directly under other sectors when the production means is applied; that is, those functions that are not administrative but are goods or service producing would be separated and placed under the appropriate sector. In this instance, construction or maintenance-related activities under the highways agency would now fall under the construction sector, while those that are administrative would remain in public administration. This is a clear example of how NAICS industries are classified according to the single economic principle of similar production processes.

Both the SIC and NAICS have extensive hierarchies, so this has been merely a quick overview of their major classification categories—the real story of the many changes lies within the detailed industry sector structures. More information on NAICS can be found at the U.S. Census Bureau NAICS page (<http://www.census.gov/epcd/www/naics/html>), and at the Bureau of Labor Statistics NAICS page (<http://www.bls.gov/bls/naics.htm>).

One downside of NAICS is the disruption of historical continuity between the old and new data series. State and area published employment series will have a NAICS-based history extending back to January 1990. However, state and area hours and earnings series will begin with January 2001. Where we have been able in the past to extend these series quite far back chronologically, there will now be a distinct break between the old and the new that will not allow easy comparison.



**West Virginia  
Economic Summary is  
published by the West  
Virginia Bureau of  
Employment Programs,  
Research, Information  
and Analysis Division  
112 California Ave.  
Charleston, WV 25305**

**Bob Wise**  
Governor

**Robert J. Smith**  
Commissioner

**David R. Calvert**  
Director

Visit the Bureau of  
Employment Programs  
Web site  
[www.state.wv.us/bep](http://www.state.wv.us/bep)

For subscription or  
additional information,  
call 304.558.2660  
fax 304.558.1343  
e-mail [LMI@WVBEP.ORG](mailto:LMI@WVBEP.ORG)

## On the Web

by Leslie McCormick

### What's New

- ✓ Long-term Occupational Projections (2000-2010): Statewide and Workforce Investment Areas

### Online Publications

- ✓ Economic Summary
- ✓ Employment and Earnings Trends
- ✓ Employment and Wages
- ✓ West Virginia County Profiles

## Ask an Analyst

by Steve Shackelford

### What is the "Consumer Price Index"?

The Consumer Price Index (CPI) is a measure of the average change over time in prices paid by urban consumers for a "market basket" of consumer goods and services. It reflects the spending patterns of two population groups: All Urban Consumers (CPI-U) and Urban Wage Earners and Clerical Workers (CPI-W). The CPI-U represents approximately 87 percent of the total United States population. The CPI frequently is called a "cost-of-living" index. Geographically, the CPI is measured at the national, regional, major metropolitan statistical areas and major city levels.

*E-mail your questions to [LMI@WVBEP.ORG](mailto:LMI@WVBEP.ORG)*

## Occupational Profile

by Jeff Green

### Computer Software Engineers, Applications (SOC 15-1031)

Individuals employed in this occupation develop, create, and modify general computer applications software or specialized utility programs. They analyze user needs and develop software solutions; design software or customize software for client use with the aim of optimizing operational efficiency; may analyze and design databases within an application area, working individually or coordinating database development as part of a team.

**Employment:** Computer applications software engineers held an estimated 870 jobs, comprising just over one tenth (.11) of one percent of West Virginia's workforce in 2000. Nearly nine tenths (.86) of one percent of the 2000 workforce consists of computer specialty occupations as a whole. While computer applications software engineers are found in a variety of industries, about 81 percent are employed in the computer and data processing services industry. Approximately 5 percent work in hospitals and 6 percent are self-employed.

**Job Outlook:** Computer applications software engineers are projected to be the third fastest growing occupation in West Virginia, and the fastest growing occupation nationally from 2000 to 2010. This occupation is expected to average approximately 70 job openings per year, 65 due to new growth and 5 due to replacement, totaling 1,510 by 2010. It is estimated that computer applications software engineers will make up nearly two tenths (.18) of one percent of West Virginia's workforce by 2010. Computer specialty occupations, as a whole, are expected to account for approximately 1.2 percent of West Virginia's 2010 workforce.

Computer applications software engineers will increase as networking, internet integration, and electronic data processing systems continue to develop and expand in both the public and private sectors.

**Earnings:** Average annual earnings for computer applications software engineers for third quarter 2002 was approximately \$60,998 with a median annual salary of \$65,233. The middle 50 percent earned between \$59,752 and \$70,728. The lowest 10 percent earned less than \$40,451, and the highest 10 percent earned more than \$74,026. Entry level earnings are estimated to be about \$48,159 and experienced earnings about \$67,417. Income levels for industries employing the largest numbers of computer applications software engineers were:

	Industry Avg.	Median	Entry	Exp.
Computer and Data Processing Services	\$63,163	\$66,603	\$56,120	\$66,684
Hospitals	\$45,046	\$43,658	\$35,480	\$49,829
Research and Testing Services	\$48,416	\$45,176	\$41,280	\$51,983

# WEST VIRGINIA NONFARM PAYROLL EMPLOYMENT

	Prelim. Dec. 2002	Revised Nov. 2002	Revised Dec. 2001	Change From: Nov. 2002	Dec. 2001
<b>TOTAL NONFARM PAYROLL</b>	<b>733.5</b>	<b>735.2</b>	<b>741.1</b>	<b>-1.7</b>	<b>-7.6</b>
<b>PRIVATE SECTOR</b>	<b>589.3</b>	<b>590.7</b>	<b>598.2</b>	<b>-1.4</b>	<b>-8.9</b>
<b>GOODS-PRODUCING</b>	<b>125.1</b>	<b>127.0</b>	<b>132.9</b>	<b>-1.9</b>	<b>-7.8</b>
<b>Mining</b>	<b>21.0</b>	<b>21.3</b>	<b>23.5</b>	<b>-0.3</b>	<b>-2.5</b>
Coal Mining	16.3	16.5	18.6	-0.2	-2.3
Oil & Gas Extraction	3.8	3.9	3.9	-0.1	-0.1
Other Mining	0.9	0.9	1.0	0.0	-0.1
<b>Construction</b>	<b>32.1</b>	<b>33.4</b>	<b>33.8</b>	<b>-1.3</b>	<b>-1.7</b>
General Building Contractors	9.7	10.1	9.1	-0.4	0.6
Heavy Construction	6.4	7.0	7.0	-0.6	-0.6
Special Trade Contractors	16.0	16.3	17.7	-0.3	-1.7
<b>Manufacturing</b>	<b>72.0</b>	<b>72.3</b>	<b>75.6</b>	<b>-0.3</b>	<b>-3.6</b>
Durable Goods	43.1	43.5	44.9	-0.4	-1.8
Lumber, Wood Products & Furniture	11.3	11.3	11.3	0.0	0.0
Stone, Clay & Glass Products	4.8	5.0	5.6	-0.2	-0.8
Primary Metals Industries	9.6	9.6	9.5	0.0	0.1
Fabricated Metal Products	5.2	5.2	5.6	0.0	-0.4
Industrial Machinery & Equipment	4.8	4.9	5.1	-0.1	-0.3
Electronic & Electrical Equipment	1.5	1.5	1.6	0.0	-0.1
Transportation Equipment	3.6	3.7	3.8	-0.1	-0.2
Other Durable Goods	2.3	2.3	2.4	0.0	-0.1
Nondurable Goods	28.9	28.8	30.7	0.1	-1.8
Food & Kindred Products	4.1	4.1	4.8	0.0	-0.7
Paper & Allied Products	1.2	1.2	1.2	0.0	0.0
Printing & Publishing	5.7	5.7	5.8	0.0	-0.1
Chemicals & Allied Products	12.1	12.0	12.8	0.1	-0.7
Other Nondurable Goods	5.8	5.8	6.1	0.0	-0.3
<b>SERVICE-PRODUCING</b>	<b>608.4</b>	<b>608.2</b>	<b>608.2</b>	<b>0.2</b>	<b>0.2</b>
<b>Transportation &amp; Public Utilities</b>	<b>35.8</b>	<b>35.9</b>	<b>37.0</b>	<b>-0.1</b>	<b>-1.2</b>
Railroad Transportation	2.9	2.9	2.9	0.0	0.0
Trucking & Warehousing	10.7	10.7	10.9	0.0	-0.2
Other Transportation	5.5	5.6	5.4	-0.1	0.1
Communications	8.3	8.3	8.5	0.0	-0.2
Electric, Gas & Sanitary Services	8.4	8.4	9.3	0.0	-0.9
<b>Trade</b>	<b>162.2</b>	<b>161.5</b>	<b>164.9</b>	<b>0.7</b>	<b>-2.7</b>
Wholesale Trade	29.1	29.3	29.7	-0.2	-0.6
Wholesale - Durables	17.9	18.0	18.3	-0.1	-0.4
Wholesale - Nondurables	11.2	11.3	11.4	-0.1	-0.2
Retail Trade	133.1	132.2	135.2	0.9	-2.1
Building Materials & Garden Supplies	5.7	5.7	5.9	0.0	-0.2
General Merchandise Stores	20.5	20.3	20.8	0.2	-0.3
Food Stores	19.3	19.4	20.4	-0.1	-1.1
Automotive Dealers & Service Stations	17.0	17.0	16.8	0.0	0.2
Apparel & Accessory Stores	5.0	4.9	5.5	0.1	-0.5
Home Furniture & Equipment Stores	4.2	4.2	4.5	0.0	-0.3
Eating & Drinking Places	45.5	45.6	44.9	-0.1	0.6
Miscellaneous Retail	15.9	15.1	16.4	0.8	-0.5
<b>Finance, Insurance, &amp; Real Estate</b>	<b>29.8</b>	<b>29.8</b>	<b>29.6</b>	<b>0.0</b>	<b>0.2</b>
Finance	14.9	14.8	14.8	0.1	0.1
Insurance	10.1	10.1	9.9	0.0	0.2
Real Estate	4.8	4.9	4.9	-0.1	-0.1
<b>Services</b>	<b>236.4</b>	<b>236.5</b>	<b>233.8</b>	<b>-0.1</b>	<b>2.6</b>
Agricultural Services	3.1	3.1	3.2	0.0	-0.1
Hotels & Other Lodging Places	8.9	9.2	8.7	-0.3	0.2
Personal Services	6.0	6.0	6.1	0.0	-0.1
Business Services	30.7	29.8	31.2	0.9	-0.5
Automotive & Miscellaneous Repair Services	8.4	8.4	8.0	0.0	0.4
Amusements, incl. Motion Pictures	10.7	11.7	10.2	-1.0	0.5
Health Services	76.9	76.7	76.1	0.2	0.8
Nursing & Personal Care Homes	12.0	12.1	12.0	-0.1	0.0
Hospitals	36.4	36.2	36.4	0.2	0.0
Other Health Services	28.5	28.4	27.7	0.1	0.8
Legal Services	6.0	6.0	5.5	0.0	0.5
Educational Services	9.4	9.4	9.3	0.0	0.1
Social Services	22.1	22.0	21.4	0.1	0.7
Membership Organizations	40.2	40.2	40.2	0.0	0.0
Engineering & Management Services	12.9	12.9	12.6	0.0	0.3
<b>Government</b>	<b>144.2</b>	<b>144.5</b>	<b>142.9</b>	<b>-0.3</b>	<b>1.3</b>
Federal	22.1	22.1	22.0	0.0	0.1
Hospitals	3.2	3.2	3.3	0.0	-0.1
U S Postal Service	5.6	5.6	5.5	0.0	0.1
Other Federal	13.3	13.3	13.2	0.0	0.1
State	45.9	46.3	46.7	-0.4	-0.8
Hospitals	1.7	1.7	1.7	0.0	0.0
Education	20.8	21.0	21.8	-0.2	-1.0
Other State	23.4	23.6	23.2	-0.2	0.2
Local	76.2	76.1	74.2	0.1	2.0
Hospitals	3.9	3.9	3.7	0.0	0.2
Education	47.7	47.7	46.5	0.0	1.2
Other Local	24.6	24.5	24.0	0.1	0.6
Labor-Management Dispute Status	0.0	0.0	0.0	xx	xx

Statewide

Total  
Nonfarm  
Payroll  
Employment  
by Industry

# WEST VIRGINIA NONFARM PAYROLL EMPLOYMENT

	Prelim. Dec. 2002	Revised Nov. 2002	Revised Dec. 2001	Change From:	
				Nov. 2002	Dec. 2001
<b>TOTAL NONFARM PAYROLL</b>	<b>354.2</b>	<b>353.8</b>	<b>359.7</b>	<b>0.4</b>	<b>-5.5</b>
<b>PRIVATE SECTOR</b>	<b>277.3</b>	<b>276.8</b>	<b>282.5</b>	<b>0.5</b>	<b>-5.2</b>
<b>GOODS-PRODUCING</b>	<b>20.8</b>	<b>20.7</b>	<b>21.8</b>	<b>0.1</b>	<b>-1.0</b>
<b>Mining</b>	<b>1.0</b>	<b>1.0</b>	<b>1.1</b>	<b>0.0</b>	<b>-0.1</b>
Coal Mining	0.4	0.4	0.5	0.0	-0.1
Oil & Gas Extraction	0.5	0.5	0.5	0.0	0.0
<b>Construction</b>	<b>2.7</b>	<b>2.7</b>	<b>2.7</b>	<b>0.0</b>	<b>0.0</b>
General Building Contractors	0.9	0.8	0.7	0.1	0.2
Heavy Construction	0.6	0.7	0.8	-0.1	-0.2
Special Trade Contractors	1.2	1.2	1.2	0.0	0.0
<b>Manufacturing</b>	<b>17.1</b>	<b>17.0</b>	<b>18.0</b>	<b>0.1</b>	<b>-0.9</b>
Durable Goods	8.6	8.5	8.7	0.1	-0.1
Lumber, Wood Products & Furniture	2.0	1.9	1.9	0.1	0.1
Stone, Clay & Glass Products	1.7	1.7	1.6	0.0	0.1
Primary Metals Industries	0.9	0.9	0.9	0.0	0.0
Fabricated Metal Products	0.6	0.6	0.6	0.0	0.0
Industrial Machinery & Equipment	1.1	1.1	1.1	0.0	0.0
Electronic & Electrical Equipment	0.6	0.6	0.7	0.0	-0.1
Transportation Equipment	0.7	0.7	0.8	0.0	-0.1
Other Durable Goods	1.0	1.0	1.1	0.0	-0.1
Nondurable Goods	8.5	8.5	9.3	0.0	-0.8
Food & Kindred Products	1.3	1.3	1.6	0.0	-0.3
Paper & Allied Products	0.3	0.3	0.3	0.0	0.0
Printing & Publishing	2.4	2.4	2.5	0.0	-0.1
Chemicals & Allied Products	2.6	2.5	2.6	0.1	0.0
Other Nondurable Goods	1.9	2.0	2.3	-0.1	-0.4
<b>SERVICE-PRODUCING</b>	<b>333.4</b>	<b>333.1</b>	<b>337.9</b>	<b>0.3</b>	<b>-4.5</b>
<b>Transportation &amp; Public Utilities</b>	<b>7.3</b>	<b>7.5</b>	<b>7.8</b>	<b>-0.2</b>	<b>-0.5</b>
Trucking & Warehousing	0.9	0.8	0.9	0.1	0.0
Other Transportation	0.9	1.0	1.0	-0.1	-0.1
Communications	3.8	3.9	3.9	-0.1	-0.1
Electric, Gas & Sanitary Services	1.7	1.8	2.0	-0.1	-0.3
<b>Trade</b>	<b>81.6</b>	<b>80.5</b>	<b>83.7</b>	<b>1.1</b>	<b>-2.1</b>
Wholesale Trade	6.6	6.6	6.6	0.0	0.0
Wholesale - Durables	3.7	3.7	3.6	0.0	0.1
Wholesale - Nondurables	2.9	2.9	3.0	0.0	-0.1
Retail Trade	75.0	73.9	77.1	1.1	-2.1
Building Materials & Garden Supplies	1.1	1.1	1.1	0.0	0.0
General Merchandise Stores	13.3	13.2	13.6	0.1	-0.3
Food Stores	10.9	10.9	11.5	0.0	-0.6
Automotive Dealers & Service Stations	5.0	5.0	5.1	0.0	-0.1
Apparel & Accessory Stores	4.0	4.1	5.0	-0.1	-1.0
Home Furniture & Equipment Stores	1.9	1.8	1.9	0.1	0.0
Eating & Drinking Places	27.5	27.1	27.2	0.4	0.3
Miscellaneous Retail	11.3	10.7	11.7	0.6	-0.4
<b>Finance, Insurance, &amp; Real Estate</b>	<b>19.2</b>	<b>19.3</b>	<b>19.3</b>	<b>-0.1</b>	<b>-0.1</b>
Finance	11.5	11.7	11.6	-0.2	-0.1
Insurance	5.4	5.3	5.3	0.1	0.1
Real Estate	2.3	2.3	2.4	0.0	-0.1
<b>Services</b>	<b>148.4</b>	<b>148.8</b>	<b>149.9</b>	<b>-0.4</b>	<b>-1.5</b>
Agricultural Services	0.5	0.5	0.5	0.0	0.0
Hotels & Other Lodging Places	5.2	5.4	5.1	-0.2	0.1
Personal Services	3.8	4.0	4.2	-0.2	-0.4
Business Services	11.3	10.7	13.3	0.6	-2.0
Automotive & Miscellaneous Repair Services	1.4	1.5	1.5	-0.1	-0.1
Amusements, incl. Motion Pictures	5.5	6.1	5.2	-0.6	0.3
Health Services	62.5	62.3	61.9	0.2	0.6
Nursing & Personal Care Homes	10.8	10.7	10.6	0.1	0.2
Hospitals	28.7	28.6	28.7	0.1	0.0
Other Health Services	23.0	23.0	22.6	0.0	0.4
Legal Services	4.6	4.6	4.4	0.0	0.2
Educational Services	5.7	5.6	5.4	0.1	0.3
Social Services	16.8	16.8	16.3	0.0	0.5
Membership Organizations	25.0	25.1	25.7	-0.1	-0.7
Engineering & Management Services	5.3	5.4	5.4	-0.1	-0.1
<b>Government</b>	<b>76.9</b>	<b>77.0</b>	<b>77.2</b>	<b>-0.1</b>	<b>-0.3</b>
Federal	9.4	9.4	9.4	0.0	0.0
Hospitals	1.8	1.8	1.8	0.0	0.0
U S Postal Service	1.8	1.9	1.9	-0.1	-0.1
Other Federal	5.8	5.7	5.7	0.1	0.1
State	22.6	22.7	23.2	-0.1	-0.6
Hospitals	0.9	0.9	1.1	0.0	-0.2
Education	11.4	11.4	12.3	0.0	-0.9
Other State	10.3	10.4	9.8	-0.1	0.5
Local	44.9	44.9	44.6	0.0	0.3
Hospitals	3.3	3.3	3.1	0.0	0.2
Education	32.0	32.0	31.9	0.0	0.1
Other Local	9.6	9.6	9.6	0.0	0.0

**Women  
Workers**

**Total  
Nonfarm  
Payroll  
Employment  
by Industry**

# WEST VIRGINIA HOURS AND EARNINGS

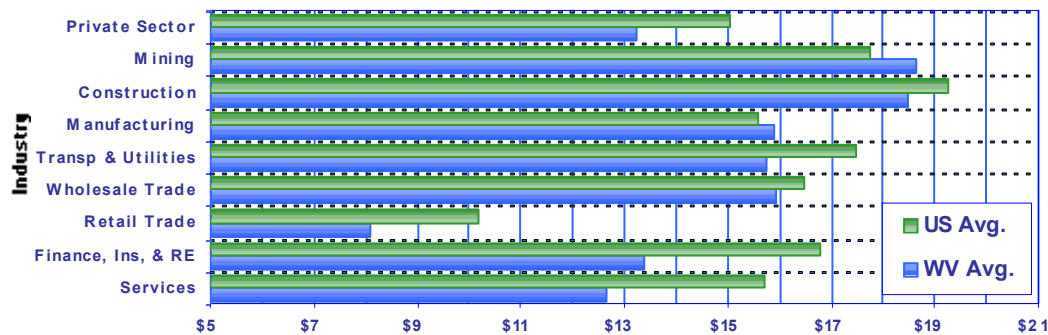
West Virginia Production and Nonsupervisory Workers	Average Weekly Earnings			Average Weekly Hours			Average Hourly Earnings		
	Dec. 2002	Nov. 2002	Dec. 2001	Dec. 2002	Nov. 2002	Dec. 2001	Dec. 2002	Nov. 2002	Dec. 2001
	<b>TOTAL PRIVATE SECTOR</b>	<b>\$463.05</b>	<b>\$457.35</b>	<b>\$456.43</b>	<b>35.0</b>	<b>34.7</b>	<b>35.3</b>	<b>\$13.23</b>	<b>\$13.18</b>
<b>Mining</b>	<b>871.42</b>	<b>842.26</b>	<b>854.92</b>	<b>46.7</b>	<b>46.0</b>	<b>44.0</b>	<b>18.66</b>	<b>18.31</b>	<b>19.43</b>
Coal Mining	973.16	937.39	933.73	48.2	47.2	44.4	20.19	19.86	21.03
Oil & Gas Extraction	474.78	478.82	494.98	41.0	41.6	41.7	11.58	11.51	11.87
Other Mining	636.00	622.63	657.86	42.4	42.5	44.3	15.00	14.65	14.85
<b>Construction</b>	<b>745.15</b>	<b>750.29</b>	<b>764.10</b>	<b>40.3</b>	<b>40.6</b>	<b>41.8</b>	<b>18.49</b>	<b>18.48</b>	<b>18.28</b>
General Building Contractors	630.63	642.77	608.96	39.0	39.8	37.8	16.17	16.15	16.11
Heavy Construction	821.34	844.43	858.27	39.0	40.5	42.3	21.06	20.85	20.29
Special Trade Contractors	782.69	775.80	803.45	41.5	41.2	43.5	18.86	18.83	18.47
<b>Manufacturing</b>	<b>656.67</b>	<b>648.08</b>	<b>617.42</b>	<b>41.3</b>	<b>41.2</b>	<b>40.7</b>	<b>15.90</b>	<b>15.73</b>	<b>15.17</b>
Durable Goods	647.77	637.98	607.99	42.2	42.0	41.7	15.35	15.19	14.58
Lumber, Wood Products & Furniture	477.98	479.14	468.13	40.2	40.4	41.1	11.89	11.86	11.39
Stone, Clay & Glass Products	534.12	542.93	522.00	39.8	41.1	40.0	13.42	13.21	13.05
Primary Metals Industries	954.35	935.66	843.48	44.7	43.6	43.3	21.35	21.46	19.48
Fabricated Metal Products	631.73	638.15	623.47	42.2	42.8	41.9	14.97	14.91	14.88
Industrial Machinery & Equipment	562.76	547.56	537.25	44.0	43.7	41.2	12.79	12.53	13.04
Electronic & Electrical Equipment	549.06	540.31	539.60	37.3	37.6	38.0	14.72	14.37	14.20
Transportation Equipment	792.90	749.52	757.31	45.0	43.3	44.6	17.62	17.31	16.98
Other Durable Goods	579.61	581.06	550.22	42.4	42.6	41.0	13.67	13.64	13.42
Nondurable Goods	675.11	663.30	631.74	39.9	39.6	38.9	16.92	16.75	16.24
Food & Kindred Products	380.90	380.30	400.96	34.1	34.2	35.8	11.17	11.12	11.20
Paper & Allied Products	621.40	609.02	618.02	42.1	41.6	43.4	14.76	14.64	14.24
Printing & Publishing	419.87	398.67	438.40	34.7	33.7	35.7	12.10	11.83	12.28
Chemicals & Allied Products	1,071.34	1,053.78	988.46	46.0	45.5	43.1	23.29	23.16	22.47
Other Nondurable Goods	432.72	447.73	408.65	37.4	38.3	36.1	11.57	11.69	11.32
<b>Transportation &amp; Public Utilities</b>	<b>687.84</b>	<b>684.69</b>	<b>668.36</b>	<b>43.7</b>	<b>43.5</b>	<b>43.4</b>	<b>15.74</b>	<b>15.74</b>	<b>15.40</b>
Trucking & Warehousing	518.70	512.80	493.43	45.5	45.3	45.9	11.40	11.32	10.75
Communications	850.63	842.40	794.80	41.8	41.6	41.7	20.35	20.25	19.06
Electric, Gas & Sanitary Services	946.94	950.32	926.54	45.2	44.7	44.1	20.95	21.26	21.01
<b>Trade</b>	<b>314.59</b>	<b>309.10</b>	<b>315.54</b>	<b>32.2</b>	<b>31.8</b>	<b>32.8</b>	<b>9.77</b>	<b>9.72</b>	<b>9.62</b>
Wholesale Trade	644.38	644.93	646.99	40.4	41.0	41.5	15.95	15.73	15.59
Wholesale - Durables	688.50	681.92	698.01	42.5	42.7	43.9	16.20	15.97	15.90
Wholesale - Nondurables	566.65	577.22	554.65	36.7	37.9	37.2	15.44	15.23	14.91
Retail Trade	247.05	240.10	246.76	30.5	29.9	31.0	8.10	8.03	7.96
Building Materials & Garden Supplies	365.91	372.75	393.21	37.3	37.5	39.4	9.81	9.94	9.98
General Merchandise Stores	275.37	260.38	267.45	32.9	31.6	33.1	8.37	8.24	8.08
Food Stores	207.20	201.78	194.86	28.5	28.3	27.6	7.27	7.13	7.06
Automotive Dealers & Service Stations	379.85	376.05	368.90	35.5	34.5	35.1	10.70	10.90	10.51
Apparel & Accessory Stores	226.80	226.68	259.17	32.4	32.9	36.4	7.00	6.89	7.12
Home Furniture & Equipment Stores	331.30	314.60	294.70	32.9	32.3	32.6	10.07	9.74	9.04
Eating & Drinking Places	159.03	158.06	156.86	25.9	25.7	26.1	6.14	6.15	6.01
Miscellaneous Retail	328.19	311.88	357.58	35.1	33.9	37.6	9.35	9.20	9.51
<b>Finance, Insurance, &amp; Real Estate</b>	<b>466.96</b>	<b>467.88</b>	<b>472.38</b>	<b>34.9</b>	<b>35.1</b>	<b>35.2</b>	<b>13.38</b>	<b>13.33</b>	<b>13.42</b>
Finance	354.35	353.79	364.39	35.4	35.7	35.9	10.01	9.91	10.15
Insurance	683.78	685.08	660.00	35.8	36.0	35.2	19.10	19.03	18.75
Real Estate	393.08	398.74	420.20	31.0	31.2	32.7	12.68	12.78	12.85
<b>Services</b>	<b>408.60</b>	<b>401.30</b>	<b>392.93</b>	<b>32.3</b>	<b>31.9</b>	<b>32.5</b>	<b>12.65</b>	<b>12.58</b>	<b>12.09</b>
Hotels & Other Lodging Places	345.55	355.68	331.78	28.7	30.4	28.8	12.04	11.70	11.52
Personal Services	318.40	300.83	284.90	32.0	31.5	30.8	9.95	9.55	9.25
Business Services	363.31	352.94	354.65	34.8	34.1	36.3	10.44	10.35	9.77
Automotive & Miscellaneous Repair Services	475.20	470.38	454.24	36.0	36.1	36.9	13.20	13.03	12.31
Amusements, incl. Motion Pictures	217.54	225.14	227.37	30.9	31.4	31.8	7.04	7.17	7.15
Health Services	525.82	516.36	508.21	34.1	33.4	34.2	15.42	15.46	14.86
Nursing & Personal Care Homes	326.11	325.58	315.68	34.4	34.2	33.3	9.48	9.52	9.48
Hospitals	584.47	586.13	573.90	34.1	33.9	34.1	17.14	17.29	16.83
Other Health Services	531.55	501.62	498.64	33.9	32.3	34.7	15.68	15.53	14.37
Legal Services	631.94	589.68	610.56	38.0	36.0	38.4	16.63	16.38	15.90
Social Services	273.40	271.08	274.88	32.9	32.7	33.4	8.31	8.29	8.23
Engineering & Management Services	634.78	627.15	617.77	37.1	37.0	37.9	17.11	16.95	16.30

Weekly  
Earnings

Weekly Hours

Hourly  
Earnings

by Industry



Average  
Hourly  
Earnings

United States  
West Virginia

December  
2002

# WEST VIRGINIA LABOR MARKET

Dec 2001 Jan 2002 Feb 2002 Mar 2002 Apr 2002 May 2002 June 2002 July 2002 Aug 2002 Sep 2002 Oct 2002 Nov 2002 Dec 2002

Civilian Labor Force	832.5	814.2	817.7	814.9	814.9	812.9	812.1	809.4	809.8	808.9	810.4	811.5	804.7
Total Employment	794.4	772.1	772.0	767.0	766.0	762.7	760.0	759.0	761.9	759.9	760.6	761.0	759.3
Total Unemployment	38.1	42.0	45.6	47.9	49.0	50.1	52.1	50.4	47.9	49.0	49.8	50.5	45.3
Unemployment Rate	4.6	5.2	5.6	5.9	6.0	6.2	6.4	6.2	5.9	6.1	6.1	6.2	5.6
<b>Total Nonfarm Payroll</b>	<b>734.6</b>	<b>733.4</b>	<b>736.8</b>	<b>736.7</b>	<b>734.2</b>	<b>731.5</b>	<b>727.2</b>	<b>723.2</b>	<b>731.8</b>	<b>727.2</b>	<b>726.3</b>	<b>726.5</b>	<b>726.8</b>
Private Sector	593.5	594.2	596.7	596.2	593.7	590.1	586.9	587.1	589.0	585.8	584.3	584.1	584.4
Goods-Producing	132.8	132.2	133.3	133.2	131.2	129.6	127.8	126.8	127.6	125.7	124.9	124.9	124.9
Mining	23.4	23.5	23.2	23.2	22.8	21.9	21.1	20.7	21.2	20.7	20.9	21.2	20.9
Construction	33.9	33.8	35.6	35.8	34.5	34.1	33.3	32.4	32.8	31.9	31.5	31.6	32.1
Manufacturing	75.5	74.9	74.5	74.2	73.9	73.6	73.4	73.7	73.6	73.1	72.5	72.1	71.9
Durable Goods	44.8	44.6	44.5	44.2	44.1	44.3	44.0	44.0	44.2	43.8	43.6	43.3	43.0
Nondurable Goods	30.7	30.3	30.0	30.0	29.8	29.3	29.4	29.7	29.4	29.3	28.9	28.8	28.9
Service-Producing	601.8	601.2	603.5	603.5	603.0	601.9	599.4	596.4	604.2	601.5	601.4	601.6	601.9
Transportation & Public Utilities	36.8	37.0	36.8	36.9	37.0	36.7	36.4	36.6	36.6	36.2	35.9	35.6	35.6
Trade	161.7	161.1	162.4	161.6	161.1	159.8	158.7	159.1	158.6	159.0	159.4	159.0	159.0
Wholesale Trade	29.7	29.6	29.6	29.5	29.3	29.2	29.2	29.2	29.1	29.1	29.3	29.3	29.1
Retail Trade	132.0	131.5	132.8	132.1	131.8	130.6	129.5	129.9	129.5	129.9	130.1	129.7	129.9
Finance, Insurance, & Real Estate	29.7	29.8	30.0	29.5	29.6	29.3	29.5	29.3	29.6	29.7	29.7	29.9	29.9
Services	232.5	234.1	234.2	235.0	234.8	234.7	234.5	235.3	236.6	235.2	234.4	234.7	235.0
Government	141.1	139.2	140.1	140.5	140.5	141.4	140.3	136.1	142.8	141.4	142.0	142.4	142.4

**Labor Force**

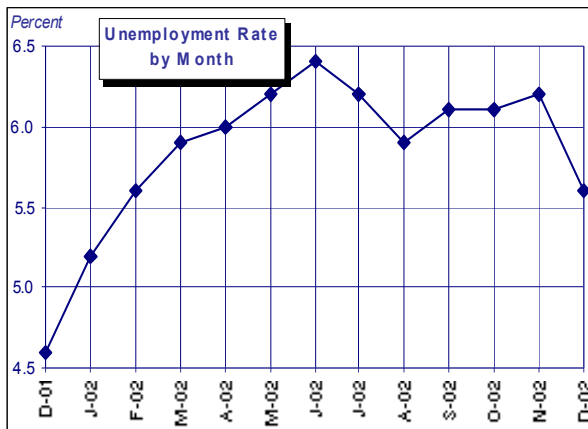
---

**Nonfarm Payroll Employment**

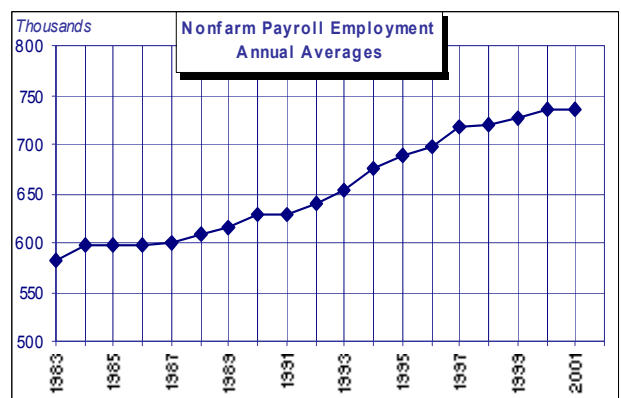
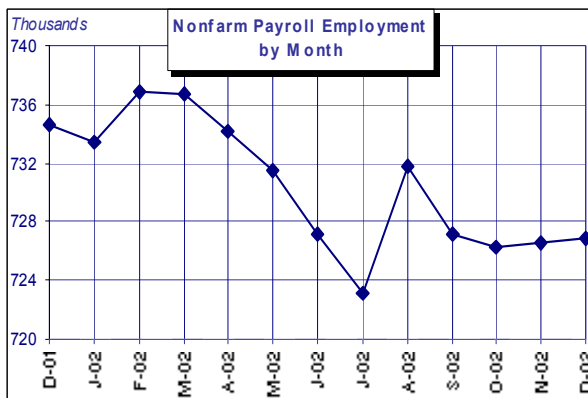
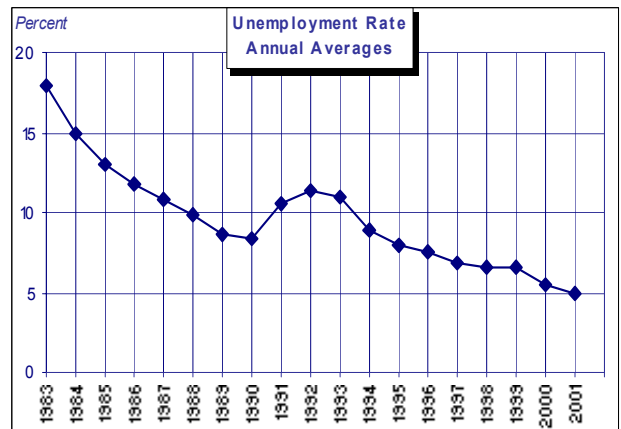
---

**Seasonally Adjusted**

**Current Data**



**Annual Averages**



# LABOR FORCE DATA BY STATE

State	December 2002				November 2002			
	Civilian Labor Force	Unemployment	Rate	Rank	Civilian Labor Force	Unemployment	Rate	Rank
Alabama	2,158.6	125.8	5.8	16	2,161.5	126.3	5.8	15
Alaska	333.4	24.7	7.4	1	331.7	22.6	6.8	2
Arizona	2,507.2	139.3	5.6	17	2,503.1	145.0	5.8	15
Arkansas	1,286.7	65.1	5.1	29	1,289.4	64.6	5.0	30
California	17,610.4	1,164.6	6.6	5	17,658.8	1,155.5	6.5	6
Colorado	2,362.2	129.4	5.5	21	2,360.6	122.8	5.2	23
Connecticut	1,727.4	80.0	4.6	38	1,727.8	75.6	4.4	36
Delaware	409.7	16.1	3.9	45	410.0	16.6	4.1	41
District of Columbia	269.1	17.8	6.6	5	268.4	16.4	6.1	12
Florida	7,775.2	411.6	5.3	26	7,768.4	404.5	5.2	23
Georgia	4,240.0	203.6	4.8	32	4,225.3	196.8	4.7	32
Hawaii	592.8	24.9	4.2	41	592.5	23.1	3.9	45
Idaho	687.9	38.6	5.6	17	685.4	39.5	5.8	15
Illinois	6,210.6	398.4	6.4	7	6,244.2	417.8	6.7	4
Indiana	3,130.0	148.9	4.8	32	3,132.1	155.0	4.9	31
Iowa	1,619.8	63.0	3.9	45	1,621.0	63.5	3.9	45
Kansas	1,452.9	66.1	4.6	38	1,456.5	67.0	4.6	34
Kentucky	1,979.5	106.7	5.4	23	1,980.9	101.7	5.1	25
Louisiana	2,012.5	127.4	6.3	9	1,998.3	123.3	6.2	9
Maine	692.0	32.3	4.7	35	689.8	30.1	4.4	36
Maryland	2,892.8	118.5	4.1	44	2,905.5	117.7	4.1	41
Massachusetts	3,365.2	175.7	5.2	28	3,374.1	170.4	5.1	25
Michigan	5,105.2	301.6	5.9	14	5,118.8	291.0	5.7	18
Minnesota	2,841.7	111.1	3.9	45	2,850.9	112.9	4.0	43
Mississippi	1,315.2	87.8	6.7	4	1,317.9	89.2	6.8	2
Missouri	2,942.5	144.8	4.9	31	2,954.6	150.5	5.1	25
Montana	474.8	20.2	4.2	41	476.1	20.9	4.4	36
Nebraska	958.4	32.9	3.4	49	958.4	32.1	3.3	49
Nevada	1,053.9	52.4	5.0	30	1,049.1	48.6	4.6	34
New Hampshire	713.4	33.9	4.8	32	715.4	33.4	4.7	32
New Jersey	4,257.7	236.0	5.5	21	4,267.9	237.5	5.6	19
New Mexico	864.2	51.2	5.9	14	864.8	51.2	5.9	14
New York	9,011.2	564.0	6.3	9	8,980.1	537.3	6.0	13
North Carolina	3,952.6	254.1	6.4	7	3,955.4	243.8	6.2	9
North Dakota	336.2	10.0	3.0	50	338.1	11.6	3.4	48
Ohio	5,874.4	314.2	5.3	26	5,882.9	322.2	5.5	21
Oklahoma	1,689.4	79.1	4.7	35	1,679.5	71.4	4.3	39
Oregon	1,806.2	127.2	7.0	2	1,816.8	129.1	7.1	1
Pennsylvania	6,116.1	369.3	6.0	12	6,097.4	339.8	5.6	19
Rhode Island	509.2	27.3	5.4	23	513.5	26.4	5.1	25
South Carolina	2,022.0	122.0	6.0	12	2,028.1	127.7	6.3	7
South Dakota	412.4	12.3	3.0	50	411.0	11.4	2.8	50
Tennessee	2,871.4	134.2	4.7	35	2,864.7	124.5	4.3	39
Texas	10,722.3	668.9	6.2	11	10,752.0	677.5	6.3	7
Utah	1,139.2	63.6	5.6	17	1,140.6	61.4	5.4	22
Vermont	349.7	14.6	4.2	41	348.9	14.0	4.0	43
Virginia	3,776.8	146.3	3.9	45	3,786.3	147.5	3.9	45
Washington	3,069.6	209.0	6.8	3	3,072.5	204.7	6.7	4
West Virginia	804.7	45.3	5.6	17	811.5	50.5	6.2	9
Wisconsin	3,074.8	166.1	5.4	23	3,069.8	156.0	5.1	25
Wyoming	273.3	12.0	4.4	40	272.7	11.5	4.2	51
United States	142,542.0	8,590.0	6.0	xx	142,733.0	8,508.0	6.0	xx

Comparative  
State Rates

Seasonally adjusted data.

## TRENDS IN THE LABOR MARKET

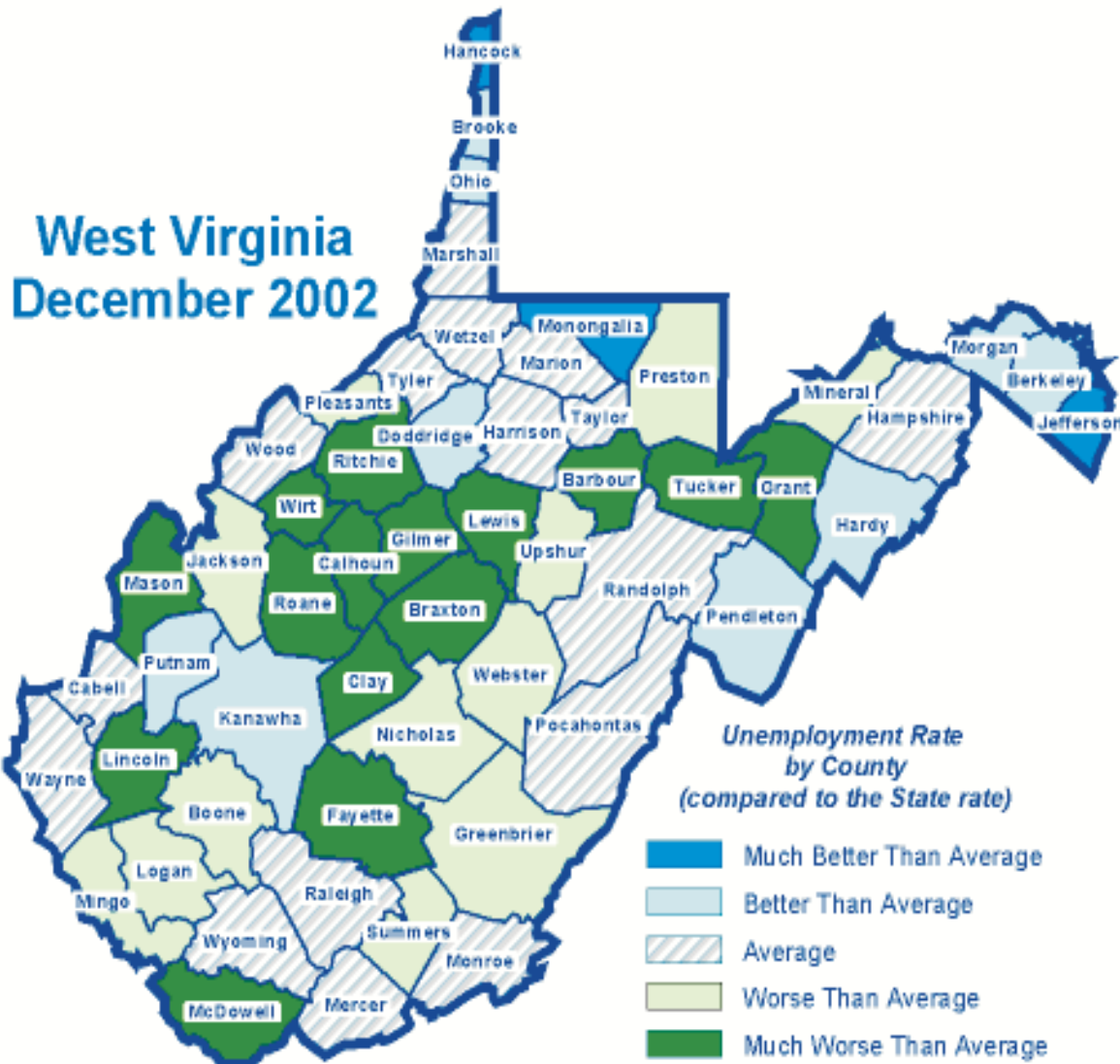
		<i>Dec. 2002</i>	<i>Nov. 2002</i>	<i>Dec. 2001</i>	
<b>West Virginia Economic Indicators</b>	Average Weekly Hours in Manufacturing Unadjusted	41.3	41.2	40.7	
	Seasonally Adjusted	41.1	41.1	40.5	
	Total Production Worker Hours in Manufacturing (000), Weekly, Unadjusted	2,293	2,296	2,365	
	Average Weekly Earnings in Manufacturing, Unadjusted	\$656.67	\$648.08	\$617.42	
	Average Weekly Hours in Bituminous Coal Mining, Unadjusted	48.2	47.2	44.4	
	Average Weekly Earnings in Bituminous Coal Mining, Unadjusted	\$973.16	\$937.39	\$933.73	
	Coal Production (tons)	12,661	12,441	12,008	
	Commercial and Industrial Electric Power Sales (000,000 KWH) Unadjusted	1,422	1,297	1,336	
	Seasonally Adjusted	1,440	1,395	1,352	
	New Motor Vehicle Registrations, Unadjusted	5,082	5,078	5,275	
	Interstate Initial Claims Unadjusted	609	409	466	
	Seasonally Adjusted	516	390	395	
	Average Weekly Initial Claims Unadjusted	2,660	1,802	2,015	
	Seasonally Adjusted	2,134	1,885	1,616	
	Insured Unemployment Rate Unadjusted	3.2	2.5	2.4	
	Seasonally Adjusted	3.1	3.2	2.3	
	Unemployment Rate, Seasonally Adjusted	5.6	6.2	4.6	
	<b>Selected National Data</b>	Civilian Unemployment Rate Unadjusted	5.7	5.7	5.4
		Seasonally Adjusted	6.0	6.0	5.8
		Consumer Price Index, All Urban Consumers Unadjusted 1982-84 Base	180.9	181.3	176.7
1967 Base		541.9	543.1	529.2	
Producer Price Index, Finished Goods Unadjusted, 1982 Base		139.1	139.6	137.2	
Initial Claims for Unemployment Insurance (000) Week including 12th, Unadjusted		481.1	367.7	439.3	
Insured Unemployment Rate, Week including 12th Unadjusted		2.8	2.6	2.9	
Seasonally Adjusted		2.7	2.9	2.9	
Average Hours and Earnings of Private Sector Production & Nonsupervisory Workers, Unadjusted					
Average Weekly Earnings		\$517.72	\$508.64	\$502.58	
Average Weekly Hours		34.4	34.0	34.4	
Average Hourly Earnings		\$15.05	\$14.96	\$14.61	

COUNTY EMPHASIS

West Virginia's unemployment rate fell three-tenths of a percentage point to 5.5 percent during December 2002. The majority of the counties mirrored this decline, with over half posting lower unemployment rates. The number of counties reporting an unemployment rate that is much worse than average when compared to the state rate was unchanged from the previous month. This group includes Tucker (8.4), Gilmer (8.4), Barbour (8.4), Ritchie (8.9), Fayette (8.9), Lewis (9.2), Lincoln (9.4), Clay (10.3), McDowell (10.6), Roane (11.0), Braxton (11.2), Mason (11.3), Grant (12.6), Wirt (13.0), and Calhoun (17.9). The number of counties reporting an unemployment rate that is better than average when compared to the state rate was also unchanged. This group contains Doddridge (4.3), Kanawha (4.3), Pendleton (4.3), Putnam (4.2), Ohio (3.9), Berkeley (3.8), Hardy (3.4), Morgan (3.1), and Brooke (2.9). The counties of Hancock (2.7) and Jefferson (2.6) joined Monongalia (2.6) in having an unemployment rate considered much better than average when compared to the state rate.

Analysis of  
County  
Labor Force  
Data

December  
2002



# WEST VIRGINIA COUNTY DATA

## Labor Force Statistics by County

	Civilian Labor Force			Total Employment			Total Unemployment			Rate		
	Dec.	Nov.	Dec.	Dec.	Nov.	Dec.	Dec.	Nov.	Dec.	Dec.	Nov.	Dec.
	2002	2002	2001	2002	2002	2001	2002	2002	2001	2002	2002	2001
Barbour	5,820	5,950	6,320	5,330	5,470	5,920	490	490	400	8.4	8.2	6.3
Berkeley	37,650	37,470	38,300	36,230	35,800	36,980	1,420	1,670	1,320	3.8	4.5	3.4
Boone	8,170	8,330	8,190	7,550	7,560	7,790	620	780	400	7.6	9.3	4.8
Braxton	5,190	5,300	5,290	4,610	4,730	4,900	580	570	390	11.2	10.8	7.3
Brooke	10,610	10,850	11,310	10,300	10,410	10,860	310	430	450	2.9	4.0	3.9
Cabell	42,040	42,020	43,850	40,210	40,000	41,880	1,840	2,020	1,970	4.4	4.8	4.5
Calhoun	2,670	2,720	2,680	2,190	2,200	2,290	480	520	380	17.9	19.0	14.2
Clay	4,270	4,240	4,250	3,830	3,830	3,980	440	410	270	10.3	9.7	6.4
Doddridge	3,270	3,300	3,420	3,130	3,140	3,260	140	160	160	4.3	4.8	4.8
Fayette	17,210	17,550	17,270	15,670	15,900	16,060	1,540	1,650	1,210	8.9	9.4	7.0
Gilmer	2,640	2,680	2,640	2,420	2,460	2,540	220	220	100	8.4	8.3	3.9
Grant	4,290	4,230	4,970	3,750	3,790	4,750	540	440	230	12.6	10.4	4.6
Greenbrier	15,610	15,390	15,940	14,390	14,300	14,730	1210	1100	1,200	7.8	7.1	7.5
Hampshire	9,310	9,460	9,550	8,860	8,910	9,060	450	550	490	4.9	5.8	5.1
Hancock	14,040	14,250	14,990	13,670	13,810	14,400	380	440	590	2.7	3.1	3.9
Hardy	7,870	7,810	8,500	7,600	7,560	8,270	270	250	230	3.4	3.2	2.7
Harrison	34,150	34,440	35,520	32,450	32,560	33,770	1,710	1,880	1,750	5.0	5.5	4.9
Jackson	12,490	12,560	12,960	11,580	11,740	12,250	910	820	710	7.3	6.5	5.5
Jefferson	22,880	22,720	23,370	22,270	22,010	22,730	610	710	640	2.6	3.1	2.7
Kanawha	103,400	105,040	108,600	98,910	100,050	104,420	4,490	4,990	4,180	4.3	4.7	3.9
Lewis	7,060	7,070	7,030	6,410	6,430	6,620	650	640	410	9.2	9.1	5.8
Lincoln	7,130	7,150	6,940	6,470	6,430	6,430	670	720	510	9.4	10.1	7.3
Logan	12,290	12,490	12,630	11,420	11,480	12,080	860	1,020	550	7.0	8.1	4.4
McDowell	7,230	7,330	7,060	6,460	6,460	6,690	760	870	370	10.6	11.9	5.3
Marion	23,150	23,410	24,630	21,860	21,910	23,320	1,290	1,500	1,310	5.6	6.4	5.3
Marshall	15,980	16,030	16,650	14,960	15,000	15,810	1020	1,030	840	6.4	6.4	5.0
Mason	8,990	9,340	9,160	7,970	8,470	8,210	1020	870	960	11.3	9.3	10.4
Mercer	28,160	28,520	28,980	26,860	27,000	27,890	1,290	1,520	1,090	4.6	5.3	3.8
Mineral	12,620	12,330	12,810	11,670	11,450	12,130	940	880	680	7.5	7.1	5.3
Mingo	8,080	8,240	8,280	7,420	7,420	7,850	660	820	440	8.1	9.9	5.3
Monongalia	42,710	42,850	43,280	41,620	41,700	42,460	1,100	1,150	820	2.6	2.7	1.9
Monroe	5,420	5,370	5,490	5,150	5,110	5,270	270	250	220	5.0	4.7	4.1
Morgan	6,440	6,480	6,570	6,240	6,270	6,350	200	210	220	3.1	3.2	3.3
Nicholas	10,930	11,060	11,420	10,120	10,200	10,780	810	870	630	7.4	7.8	5.5
Ohio	24,100	24,330	25,330	23,170	23,240	24,490	930	1,080	840	3.9	4.5	3.3
Pendleton	4,260	4,240	4,190	4,070	4,060	4,090	190	180	110	4.3	4.3	2.6
Pleasants	2,800	2,800	2,920	2,570	2,570	2,770	230	230	150	8.2	8.3	5.0
Pocahontas	4,830	4,160	4,200	4,540	3,780	3,820	290	390	380	5.9	9.3	9.1
Preston	14,380	14,280	14,270	13,350	13,380	13,620	1,020	900	650	7.1	6.3	4.6
Putnam	26,710	27,160	27,960	25,610	25,900	27,030	1,110	1,260	930	4.2	4.6	3.3
Raleigh	34,660	34,430	35,660	32,930	32,500	34,290	1,730	1,930	1,360	5.0	5.6	3.8
Randolph	13,790	13,910	14,270	12,900	13,000	13,430	890	910	840	6.5	6.5	5.9
Ritchie	4,410	4,480	4,400	4,010	4,100	4,100	390	380	290	8.9	8.4	6.7
Roane	5,600	5,600	6,020	4,980	5,030	5,450	620	560	570	11.0	10.1	9.4
Summers	4,340	4,360	4,400	3,990	4,020	4,140	350	340	260	8.1	7.7	6.0
Taylor	6,990	7,000	7,240	6,570	6,590	6,840	420	410	400	6.0	5.8	5.6
Tucker	3,440	3,350	3,440	3,150	3,030	3,230	290	320	200	8.4	9.6	5.9
Tyler	4,140	4,100	4,440	3,950	3,930	4,230	200	170	210	4.7	4.1	4.7
Upshur	10,840	11,020	11,500	10,110	10,320	10,930	730	700	570	6.7	6.3	5.0
Wayne	16,670	16,670	17,320	15,730	15,650	16,380	950	1,020	940	5.7	6.1	5.4
Webster	3,080	3,130	3,250	2,840	2,860	3,030	240	270	230	7.7	8.5	6.9
Wetzel	7,430	7,370	7,990	6,970	6,950	7,470	460	420	520	6.1	5.7	6.4
Wirt	2,050	2,070	2,080	1,780	1,790	1,910	270	280	160	13.0	13.4	7.9
Wood	43,270	43,580	44,920	41,050	41,180	42,970	2,220	2,390	1,950	5.1	5.5	4.3
Wyoming	8,010	8,090	8,180	7,480	7,500	7,870	530	590	310	6.6	7.3	3.8
Statewide	805,500	810,100	832,800	761,300	762,900	794,800	44,200	47,200	38,000	5.5	5.8	4.6

# WEST VIRGINIA COUNTY DATA

	Total Nonfarm Payroll			Goods Producing			Service Producing		
	Dec. 2002	Nov. 2002	Dec. 2001	Dec. 2002	Nov. 2002	Dec. 2001	Dec. 2002	Nov. 2002	Dec. 2001
Barbour	3,690	3,770	3,920	370	390	500	3,320	3,380	3,420
Berkeley	28,410	27,730	27,870	4,790	4,830	5,150	23,620	22,900	22,720
Boone	8,210	8,160	8,110	3,570	3,550	3,530	4,640	4,620	4,580
Braxton	4,110	4,210	4,180	730	750	710	3,380	3,460	3,470
Brooke	10,520	10,030	10,040	2,720	2,690	2,860	7,800	7,340	7,180
Cabell	54,690	54,340	54,090	7,770	7,780	7,790	46,920	46,560	46,300
Calhoun	1,500	1,510	1,510	370	380	390	1,130	1,120	1,130
Clay	2,150	2,140	2,140	650	650	650	1,500	1,490	1,490
Doddridge	1,230	1,250	1,250	170	180	170	1,060	1,070	1,080
Fayette	13,510	13,670	13,280	1,720	1,740	1,700	11,790	11,940	11,580
Gilmer	2,120	2,150	2,130	560	610	530	1,560	1,540	1,590
Grant	4,100	4,140	5,020	1,170	1,210	2,190	2,920	2,940	2,830
Greenbrier	13,080	13,280	13,050	1,640	1,640	1,730	11,440	11,650	11,320
Hampshire	4,200	4,240	4,050	500	510	520	3,700	3,740	3,530
Hancock	14,300	14,240	14,170	5,770	5,710	6,000	8,530	8,530	8,170
Hardy	6,370	6,350	6,630	3,620	3,630	3,940	2,750	2,720	2,690
Harrison	33,580	33,710	33,580	4,550	4,650	4,620	29,040	29,070	28,950
Jackson	9,260	9,340	9,360	3,140	3,170	3,250	6,120	6,170	6,110
Jefferson	14,020	14,170	13,410	2,050	2,060	1,990	11,970	12,120	11,430
Kanawha	115,740	116,940	118,210	12,600	13,310	14,070	103,140	103,640	104,130
Lewis	5,960	5,980	5,890	970	990	1,180	4,990	4,990	4,710
Lincoln	3,190	3,170	3,040	550	570	540	2,640	2,600	2,500
Logan	12,060	12,050	12,200	2,110	2,140	2,320	9,950	9,910	9,880
McDowell	6,060	6,010	6,000	1,010	1,030	1,080	5,050	4,980	4,920
Marion	21,240	21,170	21,680	3,310	3,360	3,680	17,930	17,810	18,000
Marshall	11,170	11,240	11,550	3,060	3,140	3,440	8,110	8,090	8,110
Mason	6,770	7,250	6,630	900	1,410	970	5,860	5,840	5,650
Mercer	25,440	25,400	25,130	2,450	2,420	2,560	22,990	22,980	22,570
Mineral	7,780	7,830	7,550	1,700	1,730	1,640	6,070	6,100	5,910
Mingo	8,850	8,840	8,980	3,030	3,020	3,160	5,820	5,830	5,810
Monongalia	48,510	48,570	47,310	4,680	4,760	4,550	43,830	43,800	42,760
Monroe	2,390	2,390	2,420	400	410	440	2,000	1,980	1,980
Morgan	3,250	3,260	3,170	540	550	550	2,710	2,710	2,620
Nicholas	9,330	9,330	9,510	2,020	2,030	2,090	7,320	7,300	7,420
Ohio	29,830	29,950	29,790	2,640	2,690	2,620	27,200	27,260	27,170
Pendleton	1,860	1,830	1,830	150	150	160	1,700	1,680	1,670
Pleasants	2,810	2,800	2,890	740	740	790	2,060	2,060	2,100
Pocahontas	4,480	3,710	3,570	590	610	630	3,890	3,100	2,930
Preston	7,260	7,240	7,220	1,750	1,760	1,810	5,510	5,480	5,420
Putnam	19,560	19,260	18,590	4,400	4,400	4,430	15,160	14,860	14,170
Raleigh	32,240	31,760	32,200	4,020	4,080	4,670	28,230	27,680	27,540
Randolph	12,430	12,550	12,420	2,460	2,500	2,500	9,970	10,050	9,920
Ritchie	3,340	3,410	3,270	1,650	1,710	1,570	1,690	1,700	1,700
Roane	3,530	3,540	3,690	900	900	1,000	2,620	2,640	2,690
Summers	2,700	2,710	2,680	130	140	160	2,560	2,570	2,520
Taylor	3,460	3,490	3,410	670	690	730	2,790	2,800	2,680
Tucker	3,010	2,890	2,960	480	510	570	2,540	2,390	2,390
Tyler	2,840	2,830	2,820	910	920	970	1,930	1,910	1,850
Upshur	8,770	8,900	9,070	2,060	2,140	2,420	6,710	6,760	6,660
Wayne	11,140	11,150	10,810	2,630	2,630	2,220	8,510	8,520	8,590
Webster	2,400	2,420	2,450	700	710	720	1,700	1,710	1,730
Wetzel	5,340	5,310	5,570	660	640	820	4,680	4,670	4,760
Wirt	820	830	840	180	180	180	640	650	660
Wood	44,100	44,220	44,200	8,240	8,360	8,520	35,860	35,860	35,680
Wyoming	6,140	6,130	6,190	1,640	1,620	1,620	4,500	4,500	4,570
Statewide	733,500	735,200	741,100	125,100	127,000	132,900	608,400	608,200	608,200

**Nonfarm  
Payroll  
Employment  
by County**

# WEST VIRGINIA COUNTY DATA

## Population and Per Capita Income by County

	2000 Census	Population Estimated July 1, 2001	1990 Census	Change from 2000 to July 1, 2001 Estimate Number	Change from 2000 to July 1, 2001 Estimate Percent	Per Capita Personal Income 2000
Barbour	15,557	15,514	15,699	-43	-0.3	\$16,308
Berkeley	75,905	79,202	59,253	3,297	4.3	23,027
Boone	25,535	25,427	25,870	-108	-0.4	21,348
Braxton	14,702	14,747	12,998	45	0.3	15,244
Brooke	25,447	25,117	26,992	-330	-1.3	21,690
Cabell	96,784	95,682	96,827	-1,102	-1.1	23,837
Calhoun	7,582	7,392	7,885	-190	-2.5	15,109
Clay	10,330	10,324	9,983	-6	-0.1	14,994
Doddridge	7,403	7,745	6,994	342	4.6	17,699
Fayette	47,579	47,089	47,952	-490	-1.0	18,027
Gilmer	7,160	7,120	7,669	-40	-0.6	17,456
Grant	11,299	11,340	10,428	41	0.4	19,121
Greenbrier	34,453	34,479	34,693	26	0.1	21,243
Hampshire	20,203	20,798	16,498	595	2.9	16,591
Hancock	32,667	32,258	35,233	-409	-1.3	24,145
Hardy	12,669	12,740	10,977	71	0.6	19,449
Harrison	68,652	67,989	69,371	-663	-1.0	25,080
Jackson	28,000	28,099	25,938	99	0.4	19,688
Jefferson	42,190	43,545	35,926	1,355	3.2	26,879
Kanawha	200,073	197,338	207,619	-2,735	-1.4	28,681
Lewis	16,919	16,897	17,223	-22	-0.1	18,239
Lincoln	22,108	22,316	21,382	208	0.9	14,736
Logan	37,710	36,897	43,032	-813	-2.2	18,207
McDowell	27,329	26,568	35,233	-761	-2.8	15,201
Marion	56,598	56,373	57,249	-225	-0.4	20,731
Marshall	35,519	35,171	37,356	-348	-1.0	20,040
Mason	25,957	26,175	25,178	218	0.8	18,140
Mercer	62,980	62,355	64,980	-625	-1.0	22,047
Mineral	27,078	27,059	26,697	-19	-0.1	19,424
Mingo	28,253	27,714	33,739	-539	-1.9	19,701
Monongalia	81,866	81,820	75,509	-46	-0.1	24,100
Monroe	14,583	14,610	12,406	27	0.2	14,584
Morgan	14,943	15,275	12,128	332	2.2	19,973
Nicholas	26,562	26,420	26,775	-142	-0.5	18,284
Ohio	47,427	46,750	50,871	-677	-1.4	28,009
Pendleton	8,196	8,070	8,054	-126	-1.5	19,665
Pleasants	7,514	7,589	7,546	75	1.0	21,222
Pocahontas	9,131	8,996	9,008	-135	-1.5	20,500
Preston	29,334	29,443	29,037	109	0.4	17,085
Putnam	51,589	51,680	42,835	91	0.2	24,879
Raleigh	79,220	78,548	76,819	-672	-0.8	21,426
Randolph	28,262	28,231	27,803	-31	-0.1	20,068
Ritchie	10,343	10,291	10,233	-52	-0.5	17,545
Roane	15,446	15,364	15,120	-82	-0.5	16,519
Summers	12,999	12,796	14,204	-203	-1.6	16,097
Taylor	16,089	16,017	15,144	-72	-0.4	15,192
Tucker	7,321	7,214	7,728	-107	-1.5	18,387
Tyler	9,592	9,460	9,796	-132	-1.4	17,113
Upshur	23,404	23,374	22,867	-30	-0.1	17,568
Wayne	42,903	42,665	41,636	-238	-0.6	16,028
Webster	9,719	9,642	10,729	-77	-0.8	14,246
Wetzel	17,693	17,395	19,258	-298	-1.7	20,463
Wirt	5,873	5,935	5,192	62	1.1	16,022
Wood	87,986	87,541	86,915	-445	-0.5	24,185
Wyoming	25,708	25,320	28,990	-388	-1.5	15,666
West Virginia	1,808,344	1,801,916	1,793,477	-6,428	-0.4	\$21,738
United States	281,421,906	284,796,887	248,709,873	3,374,981	1.2	\$29,469

**Charleston MSA**

**MSA Quick Stats**

Charleston MSA: ..... Kanawha and Putnam Counties, WV  
 Total Population July 1, 2001: ..... 249,018  
 16 years & over (Based on 2000 Census):  
     Population: ..... 202,503  
     Participation Rate: ..... 70.4%  
 Per capita Personal Income 2000: ..... \$27,898  
 Poverty Rate: ..... 13.3%

**In December 2002...**

- ✓ Total nonfarm payroll count down by 900 jobs
- ✓ Construction declined seasonally by 600 jobs
- ✓ Service-producing job count relatively unchanged
- ✓ Total services up slightly by 200 jobs

**Over the year...**

- ✓ Total MSA job count down 1,500 over the year
- ✓ Manufacturing and mining down by a combined 1,300 jobs
- ✓ Trade and TPU together down by 1,000 jobs



**Charleston Metropolitan Statistical Area**

Labor Force Data	Prelim.	Revised	Revised
	Dec. 2002	Nov. 2002	Dec. 2001
<i>In Thousands Not Seasonally Adjusted</i>			
Civilian Labor Force	130.1	132.2	136.6
Total Employment	124.5	126.0	131.5
Total Unemployment	5.6	6.2	5.1
Unemployment Rate	4.3	4.7	3.7

Industry	Nonfarm Payroll Employment*			Average Weekly Hours			Average Hourly Earnings		
	Dec. 2002	Nov. 2002	Dec. 2001	Dec. 2002	Nov. 2002	Dec. 2001	Dec. 2002	Nov. 2002	Dec. 2001
<b>TOTAL NONFARM PAYROLL</b>	<b>135.3</b>	<b>136.2</b>	<b>136.8</b>						
<b>PRIVATE SECTOR</b>	<b>110.1</b>	<b>110.8</b>	<b>112.3</b>	<b>36.4</b>	<b>36.3</b>	<b>35.7</b>	<b>14.31</b>	<b>14.44</b>	<b>14.24</b>
<b>GOODS-PRODUCING</b>	<b>17.0</b>	<b>17.7</b>	<b>18.5</b>						
Mining	2.1	2.3	2.7						
Construction	6.5	7.1	6.7	38.0	39.6	38.4	23.64	23.50	19.96
Manufacturing	8.4	8.3	9.1	45.4	45.7	46.3	18.24	18.37	17.65
Durable Goods	3.4	3.3	3.6	41.3	41.7	42.9	18.50	18.86	17.62
Nondurable Goods	5.0	5.0	5.5	48.9	49.0	48.9	18.04	18.02	17.67
<b>SERVICE-PRODUCING</b>	<b>118.3</b>	<b>118.5</b>	<b>118.3</b>						
Transportation & Public Utilities	8.2	8.2	8.7	44.2	43.1	39.4	14.27	14.53	14.70
Trade	30.9	31.1	31.4	35.3	34.0	33.5	10.84	10.92	11.20
Wholesale Trade	7.0	7.1	7.3	44.0	42.3	42.8	16.70	17.14	17.81
Retail Trade	23.9	24.0	24.1	32.8	31.5	30.7	8.53	8.48	8.39
General Merchandise & Apparel Stores	4.3	4.3	4.5	35.0	33.0	31.9	9.01	8.86	8.63
Food Stores	3.1	3.4	3.3	25.8	25.8	27.1	7.24	7.24	7.06
Automotive Dealers & Service Stations	3.0	3.1	3.1	36.9	37.8	36.0	12.87	12.89	12.80
Eating & Drinking Places	8.6	8.4	8.5	30.8	28.8	27.8	6.00	5.92	6.08
Other Retail Trade	4.9	4.8	4.7	37.2	36.6	35.1	10.28	10.03	9.91
Finance, Insurance, & Real Estate	7.6	7.6	7.5	37.5	38.0	39.3	13.91	13.59	14.08
Services	46.4	46.2	46.2	34.2	34.6	33.4	14.44	14.37	14.20
Personal & Business Services	7.8	7.9	8.1	32.7	32.6	31.2	9.58	9.99	9.14
Health Services	14.7	14.4	14.9	33.0	32.7	32.6	19.37	19.79	18.51
Social Services	2.9	2.9	2.8	36.2	35.9	35.1	8.98	8.64	9.53
Other Services	21.0	21.0	20.4	35.3	36.6	34.7	13.51	13.08	13.60
Government	25.2	25.4	24.5						
Federal	2.9	2.9	2.6						
State	12.3	12.4	11.7						
Local	10.0	10.1	10.2						
Labor-Management Dispute Status	0.0	0.0	0.0						

*Hours and earnings represent production and nonsupervisory workers only. To derive average weekly earnings, multiply average weekly hours by average hourly earnings.*

\*In Thousands

Huntington-Ashland-Ironton MSA

Huntington-Ashland-Ironton Metropolitan Statistical Area



MSA Quick Stats

Huntington Ashland-Ironton MSA: Cabell and Wayne Counties in WV; Boyd, Carter and Greenup Counties in KY; Lawrence County in OH  
 Total Population July 1, 2001: ..... 313,930  
 16 years & over (Based on 2000 Census)  
 Population: ..... 253,279  
 Participation Rate: ..... 57.4%  
 Percapita Personal Income 2000: ..... \$21,106  
 Poverty Rate: ..... 18.3%

In December 2002...

- ✓ Total nonfarm payroll employment up 800
- ✓ Goods-producing sector nearly stationary
- ✓ Trade adds 500 jobs
- ✓ Most industries exhibited little employment change

Over the year...

- ✓ Total nonfarm payroll employment relatively unchanged
- ✓ Service-producing sector up 1,600
- ✓ Goods-producing sector down 1,400

Labor Force Data	Prelim. Dec. 2002	Revised Nov. 2002	Revised Dec. 2001
<i>In Thousands</i>			
<i>Not Seasonally Adjusted</i>			
Civilian Labor Force	135.0	134.8	138.4
Total Employment	128.3	127.9	130.3
Total Unemployment	6.7	6.9	8.1
Unemployment Rate	4.9	5.1	5.8

Industry	Nonfarm Payroll Employment*			Average Weekly Hours			Average Hourly Earnings		
	Dec. 2002	Nov. 2002	Dec. 2001	Dec. 2002	Nov. 2002	Dec. 2001	Dec. 2002	Nov. 2002	Dec. 2001
<b>TOTAL NONFARM PAYROLL</b>	<b>123.7</b>	<b>122.9</b>	<b>123.5</b>						
<b>PRIVATE SECTOR</b>	<b>100.6</b>	<b>100.1</b>	<b>101.0</b>	<b>35.1</b>	<b>34.7</b>	<b>35.6</b>	<b>\$13.07</b>	<b>\$13.05</b>	<b>\$12.84</b>
<b>GOODS-PRODUCING</b>	<b>18.1</b>	<b>18.1</b>	<b>19.5</b>						
Mining	0.8	0.8	0.9						
Construction	4.6	4.5	5.6	36.0	34.9	37.7	22.84	22.86	21.52
Manufacturing	12.7	12.8	13.0	42.3	42.6	42.9	16.43	16.20	15.90
Durable Goods	7.5	7.6	7.7	46.8	47.5	45.8	17.81	17.41	17.06
Nondurable Goods	5.2	5.2	5.3	34.9	34.3	38.3	13.38	13.38	13.70
<b>SERVICE-PRODUCING</b>	<b>105.6</b>	<b>104.8</b>	<b>104.0</b>						
Transportation & Public Utilities	6.5	6.6	6.8	41.2	41.3	40.1	15.88	15.61	16.42
Trade	31.0	30.5	30.8	34.6	33.5	32.8	8.60	8.74	8.88
Wholesale Trade	4.9	4.9	4.8	39.4	38.5	39.6	13.31	13.47	13.83
Retail Trade	26.1	25.6	26.0	33.7	32.6	31.6	7.60	7.69	7.76
General Merchandise & Apparel Stores	5.3	5.2	6.0	31.5	29.5	31.6	8.26	8.14	8.41
Food Stores	3.8	3.8	3.8	35.1	31.0	29.4	7.66	7.70	7.16
Automotive Dealers & Service Stations	2.8	2.8	2.8	35.6	39.3	36.1	8.95	8.99	8.73
Eating & Drinking Places	9.5	9.1	8.8	33.7	32.3	28.0	5.77	5.86	5.77
Other Retail Trade	4.7	4.7	4.6	34.2	34.3	37.4	9.78	9.77	9.60
Finance, Insurance, & Real Estate Services	5.2	5.1	5.0	36.0	36.0	40.6	12.21	12.20	11.09
Personal & Business Services	39.8	39.8	38.9	32.3	31.9	33.8	13.74	13.60	12.80
Health Services	8.0	7.9	7.2						
Government	15.5	15.6	15.3	36.3	35.2	36.4	17.63	17.57	17.09
Federal	23.1	22.8	22.5						
State	2.9	2.9	3.0						
Local	6.3	6.1	5.8						
Labor-Management Dispute Status	13.9	13.8	13.7						
	0.0	0.0	0.0						

Hours and earnings represent production and nonsupervisory workers only. To derive average weekly earnings, multiply average weekly hours by average hourly earnings.

\*In Thousands

# WEST VIRGINIA METROPOLITAN STATISTICAL AREAS

## Parkersburg-Marietta MSA

### MSA Quick Stats

**Parkersburg-Marietta MSA:** Wood County, WV;  
Washington County, OH

**Total Population July 1, 2001:** ..... 87,986

**16 years & over (Based on 2000 Census):**

**Population:** ..... 71,303

**Participation Rate:** ..... 67.9%

**Per capita Personal Income 2000:** ..... \$23,610

**Poverty Rate:** ..... 12.8%

### In December 2002...

- ✓ Nonfarm payroll employment decreased by 300
- ✓ Trade shows no change for December 2002
- ✓ Total unemployment declined 200 jobs
- ✓ Unemployment rate falls two-tenths of a percentage point

### Over the year...

- ✓ Nonfarm payroll employment decreased by 300 jobs
- ✓ Manufacturing employment falls 300
- ✓ Unemployment rate up from 4.0 to 5.2 percent



**Parkersburg-Marietta Metropolitan Statistical Area**

Labor Force Data	Prelim.	Revised	Revised
	Dec. 2002	Nov. 2002	Dec. 2001
<i>In Thousands</i>			
<i>Not Seasonally Adjusted</i>			
Civilian Labor Force	76.1	76.6	77.4
Total Employment	72.1	72.4	74.3
Total Unemployment	4.0	4.2	3.1
Unemployment Rate	5.2	5.4	4.0

Industry	Nonfarm Payroll Employment*			Average Weekly Hours			Average Hourly Earnings		
	Dec. 2002	Nov. 2002	Dec. 2001	Dec. 2002	Nov. 2002	Dec. 2001	Dec. 2002	Nov. 2002	Dec. 2001
<b>TOTAL NONFARM PAYROLL</b>	<b>70.0</b>	<b>70.3</b>	<b>70.3</b>						
<b>PRIVATE SECTOR</b>	<b>60.3</b>	<b>60.6</b>	<b>60.5</b>	<b>34.9</b>	<b>34.8</b>	<b>34.5</b>	<b>13.37</b>	<b>13.35</b>	<b>12.92</b>
<b>GOODS-PRODUCING</b>	<b>15.6</b>	<b>15.9</b>	<b>15.5</b>						
Mining	0.4	0.4	0.4						
Construction	3.7	3.9	3.3	40.2	40.6	39.5	21.43	21.24	19.67
Manufacturing	11.5	11.6	11.8	41.6	41.6	42.0	18.92	18.74	18.25
Durable Goods	6.0	6.1	6.2	39.8	40.1	40.4	14.61	14.73	14.64
Nondurable Goods	5.5	5.5	5.6	43.4	43.2	43.7	23.07	22.72	21.73
<b>SERVICE-PRODUCING</b>	<b>54.4</b>	<b>54.4</b>	<b>54.8</b>						
Transportation & Public Utilities	2.6	2.6	2.6	41.1	41.4	41.0	16.54	16.90	16.34
Trade	17.9	17.9	18.5	31.3	31.2	31.4	8.59	8.56	8.70
Wholesale Trade	2.5	2.5	2.7	44.8	44.6	44.5	12.22	12.01	11.61
Retail Trade	15.4	15.4	15.8	29.2	29.1	29.3	7.74	7.76	7.97
General Merchandise & Apparel Stores	3.0	2.9	3.1	29.4	29.3	30.7	8.11	7.96	7.89
Food Stores	1.5	1.5	1.6	27.5	27.5	27.5	6.94	6.94	6.94
Automotive Dealers & Service Stations	2.1	2.1	2.1	33.3	33.5	33.1	10.06	10.14	10.34
Eating & Drinking Places	5.1	5.2	5.0	25.3	25.4	24.4	5.71	5.71	5.78
Other Retail Trade	3.7	3.7	4.0	33.1	32.8	33.2	8.60	8.84	9.34
Finance, Insurance, & Real Estate	2.9	2.9	2.9	37.4	37.6	37.5	9.70	9.38	9.12
Services	21.3	21.3	21.0	32.3	32.2	31.3	11.81	11.78	11.77
Personal & Business Services	3.5	3.4	3.5	30.2	30.6	29.8	8.27	8.52	8.31
Health Services	7.5	7.5	7.5	35.3	35.0	34.0	15.52	15.74	14.96
Other Services	10.3	10.4	10.0	30.3	29.8	28.8	8.98	8.37	9.27
Government	9.7	9.7	9.8						
Federal	2.3	2.3	2.2						
State	1.3	1.3	1.2						
Local	6.1	6.1	6.4						
Labor-Management Dispute Status	0	0	0						

*Hours and earnings represent production and nonsupervisory workers only. To derive average weekly earnings, multiply average weekly hours by average hourly earnings*

\*In Thousands

Wheeling-Bridgeport MSA

Wheeling-Bridgeport Metropolitan Statistical Area



MSA Quick Stats

Wheeling-Bridgeport MSA: .. Ohio and Marshall Counties, WV; Belmont County, OH  
 Total Population July 1, 2001: ..... 151,372  
 16 years & over (Based on 2000 Census)  
 Population: ..... 68,887  
 Participation Rate: ..... 59.4%  
 Percapita Personal Income 2000: ..... \$23,610  
 Poverty Rate: ..... 15.4%

In December 2002...

- ✓ Unemployment rate falls to 5.3 percent
- ✓ Total unemployment down 200
- ✓ Total nonfarm payroll employment up 100
- ✓ Manufacturing and construction experienced slight gains

Over the year...

- ✓ Total unemployment up 800
- ✓ Unemployment rate jumped from 4.1 to 5.3 percent
- ✓ Total nonfarm payroll employment down 700
- ✓ Manufacturing experienced sole employment gain

Labor Force Data <i>In Thousands Not Seasonally Adjusted</i>	Prelim.	Revised	Revised
	Dec. 2002	Nov. 2002	Dec. 2001
Civilian Labor Force	73.2	73.6	75.1
Total Employment	69.3	69.6	72.0
Total Unemployment	3.9	4.1	3.1
Unemployment Rate	5.3	5.5	4.1

Industry	Nonfarm Payroll Employment*			Average Weekly Hours			Average Hourly Earnings		
	Dec. 2002	Nov. 2002	Dec. 2001	Dec. 2002	Nov. 2002	Dec. 2001	Dec. 2002	Nov. 2002	Dec. 2001
<b>TOTAL NONFARM PAYROLL</b>	<b>67.1</b>	<b>67.0</b>	<b>67.8</b>						
<b>PRIVATE SECTOR</b>	<b>56.7</b>	<b>56.6</b>	<b>57.3</b>	<b>34.0</b>	<b>33.9</b>	<b>33.8</b>	<b>\$12.15</b>	<b>\$12.11</b>	<b>\$12.02</b>
<b>GOODS-PRODUCING</b>	<b>10.2</b>	<b>10.0</b>	<b>10.2</b>						
Mining	1.7	1.7	1.8	46.5	46.6	48.5	19.77	19.75	20.82
Construction	2.5	2.4	2.5	39.9	39.5	39.9	17.01	17.16	18.47
Manufacturing	6.0	5.9	5.9	38.4	38.7	37.8	18.50	18.67	18.69
Durable Goods	2.3	2.3	2.4	37.5	37.7	36.3	18.71	18.74	17.64
Nondurable Goods	3.7	3.6	3.5	39.1	39.5	38.9	18.35	18.62	19.46
<b>SERVICE-PRODUCING</b>	<b>56.9</b>	<b>57.0</b>	<b>57.6</b>						
Transportation & Public Utilities	2.3	2.3	2.4	39.5	39.6	40.7	12.35	12.58	13.12
Trade	16.2	16.2	16.6	29.8	29.5	30.0	9.35	9.40	9.19
Wholesale Trade	2.5	2.5	2.7	40.6	40.7	38.5	15.07	15.08	13.79
Retail Trade	13.7	13.7	13.9	27.8	27.4	28.3	7.79	7.82	7.98
General Merchandise & Apparel Stores	1.9	1.9	2.1						
Food Stores	2.5	2.5	2.7						
Automotive Dealers & Service Stations	1.8	1.8	1.7						
Eating & Drinking Places	4.9	4.9	4.8						
Other Retail Trade	2.6	2.6	2.6						
Finance, Insurance, & Real Estate	2.9	2.9	2.9	36.1	35.8	35.9	9.78	9.50	9.82
Services	25.1	25.2	25.2	33.7	33.7	33.2	11.36	11.19	10.84
Health Services	9.6	9.6	9.5	33.2	32.9	33.3	13.47	13.25	13.35
Other Services	15.5	15.6	15.7	34.1	34.2	33.2	10.00	9.88	9.26
Government	10.4	10.4	10.5						
Federal	0.8	0.8	0.8						
State	2.5	2.5	2.4						
Local	7.1	7.1	7.3						
Labor-Management Dispute Status	0	0	0						

Hours and earnings represent production and nonsupervisory workers only. To derive average weekly earnings, multiply average weekly hours by average hourly earnings.

\*In Thousands

## Region 1

**Employment:** Total nonfarm payroll employment increased by 1,000 jobs during December 2002 in Workforce Investment Area 1. The local goods-producing sector declined slightly by 100 jobs, with minor losses in manufacturing and construction. Mining employment was unchanged over the month. All of the monthly increase in the WIA1 job count occurred in the service-producing industries sector. Total services produced a robust seasonal gain of 1,100 jobs. Temporary workers make up a large portion of this overall increase. Other industries within the sector were relatively unchanged during December. Total nonfarm payroll employment grew by 1,300 jobs from December 2001. A very real dichotomy exists in the over-the-year comparison, as goods-producing industries fell by 1,100 jobs, with job losses divided relatively evenly among member industries. However, the service-producing sector produced 2,400 jobs, fueled by a gain of 1,300 jobs in the services industries. Government also advanced sharply by 600 jobs, particularly at the local (+600) level.

**Unemployment:** Total unemployment declined by 800 jobless in Workforce Investment Area 1 during December 2002. The corresponding unemployment rate fell by five-tenths of a percentage point to 6.5 percent of the civilian labor force. However, the annual comparison reveals an increase of 1,700 jobless, with the rate growing from 5.1 percent to the current 6.5 percent.

Labor Force Data	<i>Prelim.</i>	<i>Rev.</i>	<i>Rev.</i>
<i>In Thousands</i>	<i>Dec.</i>	<i>Nov.</i>	<i>Dec.</i>
<i>Not Seasonally Adjusted</i>	<i>2002</i>	<i>2002</i>	<i>2001</i>
Civilian Labor Force	139.5	139.4	141.8
Employment	130.4	129.6	134.6
Unemployment	9.0	9.8	7.3
Unemployment Rate	6.5	7.0	5.1

**Workforce  
Investment  
Region 1**



### Nonfarm Payroll Employment

*In Thousands, Not Seasonally Adjusted*

	<i>Prelim.</i>	<i>Rev.</i>	<i>Rev.</i>
	<i>Dec. 2002</i>	<i>Nov. 2002</i>	<i>Dec. 2001</i>
Total Nonfarm Payroll	117.8	116.8	116.5
Private Sector	92.5	91.4	91.8
Goods-Producing	16.3	16.4	17.4
Mining	4.9	4.9	5.2
Coal Mining	4.6	4.6	4.9
Construction	4.3	4.4	4.8
Manufacturing	7.1	7.2	7.4
Durable Goods	5.8	5.9	6.1
Nondurable Goods	1.3	1.3	1.3
Service-Producing	101.5	100.4	99.1
Transportation & Public Utilities	6.2	6.2	6.0
Trade	27.8	27.7	27.6
Finance, Insurance & Real Estate	3.9	3.9	3.8
Services	38.3	37.2	37.0
Government	25.3	25.4	24.7
Federal	3.1	3.1	3.0
State	6.2	6.4	6.4
Local	15.9	15.9	15.3
Labor-Management Dispute Status	0.0	0.0	0.0

*Numbers may not add due to rounding.*

## WIA Region 2

### Workforce Investment Region 2

**Employment:** Total nonfarm payroll employment advanced 700 during December 2002 in Workforce Investment Area 2. The goods-producing sector was relatively unchanged over the month, with only a slight decline in mining. The service-producing sector added 700 jobs in December, with gains of 400 in trade, 200 in services, and 100 in government. Transportation and public utilities slipped 100 over the month. Comparison with year-ago data reveals an increase of 1,900 in total nonfarm payroll employment. The goods-producing sector added 100 jobs, after a gain of 700 in construction was trimmed by declines of 300 in mining and 400 in manufacturing. The service-producing sector added 1,800 jobs over the year, with a substantial gain of 1,500 in services. Trade advanced 300, while government added 200 jobs. Transportation and public utilities and finance, insurance, and real estate declined by 200 jobs each.

**Unemployment:** Total unemployment fell 900 during December 2002 in Workforce Investment Area 2. The corresponding unemployment rate declined from 6.3 to 5.5 percent of the civilian labor force. Total unemployment was up 1,000 over the year, with the rate climbing from 4.6 to 5.5 percent.

Labor Force Data	Prelim.	Rev.	Rev.
	Dec. 2002	Nov. 2002	Dec. 2001
<i>In Thousands Not Seasonally Adjusted</i>			
Civilian Labor Force	121.1	122.1	125.2
Employment	114.4	114.4	119.4
Unemployment	6.7	7.6	5.7
Unemployment Rate	5.5	6.3	4.6



### Nonfarm Payroll Employment

*In Thousands, Not Seasonally Adjusted*

	Prelim. Dec. 2002	Rev. Nov. 2002	Rev. Dec. 2001
Total Nonfarm Payroll	117.7	117.0	115.8
Private Sector	96.7	96.2	95.1
Goods-Producing	24.1	24.1	24.0
Mining	7.3	7.4	7.6
Coal Mining	6.8	6.9	7.1
Construction	6.9	6.9	6.2
Manufacturing	9.8	9.8	10.2
Durable Goods	6.4	6.4	6.6
Nondurable Goods	3.4	3.4	3.6
Service-Producing	93.6	92.9	91.8
Transportation & Public Utilities	6.7	6.8	6.9
Trade	27.5	27.1	27.2
Finance, Insurance & Real Estate	3.9	3.9	4.1
Services	34.5	34.3	33.0
Government	20.9	20.8	20.7
Federal	2.6	2.6	2.6
State	6.5	6.4	5.9
Local	11.8	11.8	12.2
Labor-Management Dispute Status	0.0	0.0	0.0

*Numbers may not add due to rounding.*

## WIA Region 3

**Employment:** Total nonfarm payroll employment declined by 1,200 jobs during December 2002 in Workforce Investment Area 3. Goods-producing sector employment fell by 700 jobs, with seasonal losses of 600 in construction. Mining fell by 200 jobs, while manufacturing posted a marginal gain of 100 during December. The local service-producing industries declined by 500 jobs, with losses of 500 in trade and 200 in government. Services rallied by 300 jobs to offset some of the overall decrease during December. Comparison with December 2001 reveals a significant decline of 2,500 in nonfarm payroll employment. The goods-producing sector decreased by 1,500 jobs, with sharp losses in mining (-700), manufacturing (-500) and construction (-400). Service-producing industry employment also performed poorly, declining by 1,000 jobs. Trade and transportation and public utilities absorbed the brunt of the decline, decreasing by 800 and 500 jobs respectively. Services also fell by 400 jobs annually. The one bright spot was total government, which grew by 600 jobs from a year ago, primarily in state (+600) government.

**Unemployment:** Total unemployment fell by 500 jobless during December 2002 in WIA3. The local unemployment rate declined by four-tenths of a percentage point to 4.3 percent of the civilian labor force. Annually, the number of jobless grew by 300 persons, with the rate increasing from 3.9 percent to the current 4.3 percent.

Labor Force Data	<i>Prelim.</i> Dec. 2002	<i>Rev.</i> Nov. 2002	<i>Rev.</i> Dec. 2001
<i>In Thousands Not Seasonally Adjusted</i>			
Civilian Labor Force	103.4	105.0	108.6
Employment	98.9	100.1	104.4
Unemployment	4.5	5.0	4.2
Unemployment Rate	4.3	4.7	3.9

**Workforce  
Investment  
Region 3**



### Nonfarm Payroll Employment

*In Thousands, Not Seasonally Adjusted*

	<i>Prelim.</i> Dec. 2002	<i>Rev.</i> Nov. 2002	<i>Rev.</i> Dec. 2001
Total Nonfarm Payroll	115.7	116.9	118.2
Private Sector	93.1	94.1	96.1
Goods-Producing	12.6	13.3	14.1
Mining	2.0	2.2	2.7
Coal Mining	1.4	1.5	1.8
Construction	4.3	4.9	4.7
Manufacturing	6.2	6.1	6.7
Durable Goods	2.0	1.9	2.1
Nondurable Goods	4.3	4.3	4.6
Service-Producing	103.1	103.6	104.1
Transportation & Public Utilities	6.5	6.5	7.0
Trade	25.2	25.7	26.0
Finance, Insurance & Real Estate	7.1	7.1	7.0
Services	41.7	41.4	42.1
Government	22.7	22.9	22.1
Federal	2.8	2.7	2.4
State	12.0	12.1	11.4
Local	8.0	8.1	8.3
Labor-Management Dispute Status	0.0	0.0	0.0

*Numbers may not add due to rounding.*



## WIA Region 5

**Employment:** Total nonfarm payroll employment increased 400 over the month of December 2002 in Workforce Investment Area 5. The goods-producing sector was unchanged, with a gain of 100 in manufacturing countering a decline of 100 in construction. Mining employment was unchanged over the month. The service-producing sector contained the gain of 400 jobs, solely within the services industries. All other major service-producing industries were unchanged over the month. Comparison with year-ago data reveals an increase of 100 jobs in total nonfarm payroll employment. The goods-producing sector saw a decline of 900, with losses of 500 in manufacturing and 400 in mining overpowering a slight gain of 100 in construction. The service-producing sector rose 1,000, with gains of 1,100 in services, 100 in transportation and public utilities, and 100 in government easily offsetting a decline of 200 in trade. Employment in finance, insurance and real estate was unchanged over the year.

**Unemployment:** Total unemployment declined 300 during December 2002 in Workforce Investment Area 5. The corresponding unemployment rate fell three-tenths of a percentage point to 4.3 percent of the civilian labor force. Total unemployment fell 100 from December 2001, with the rate remaining at 4.3 percent.

Labor Force Data	Prelim. Dec. 2002	Rev. Nov. 2002	Rev. Dec. 2001
<i>In Thousands Not Seasonally Adjusted</i>			
Civilian Labor Force	76.3	76.9	80.7
Employment	73.0	73.4	77.3
Unemployment	3.3	3.6	3.4
Unemployment Rate	4.3	4.6	4.3

**Workforce  
Investment  
Region 5**



### Nonfarm Payroll Employment

*In Thousands, Not Seasonally Adjusted*

	Prelim. Dec. 2002	Rev. Nov. 2002	Rev. Dec. 2001
Total Nonfarm Payroll	74.0	73.6	73.9
Private Sector	63.2	62.8	63.2
Goods-Producing	15.8	15.8	16.7
Mining	0.9	0.9	1.3
Coal Mining	0.9	0.9	1.3
Construction	2.3	2.4	2.2
Manufacturing	12.6	12.5	13.1
Durable Goods	8.5	8.4	8.9
Nondurable Goods	4.1	4.1	4.3
Service-Producing	58.2	57.8	57.2
Transportation & Public Utilities	2.6	2.6	2.5
Trade	14.1	14.1	14.3
Finance, Insurance & Real Estate	2.5	2.5	2.5
Services	28.3	27.8	27.2
Government	10.8	10.8	10.7
Federal	0.8	0.8	0.8
State	2.0	2.1	2.0
Local	8.0	8.0	8.0
Labor-Management Dispute Status	0.0	0.0	0.0

*Numbers may not add due to rounding.*



## WIA Region 7

**Employment:** Total nonfarm payroll employment increased by 400 jobs during December 2002 in Workforce Investment Area 7. The local goods-producing sector fell by approximately 200, with marginal monthly losses across the sector. Service-producing industries employment grew 500 jobs during December, as services increased seasonally by 700 jobs. Trade and government declined by 100 jobs each, while finance, insurance and real estate and transportation and public utilities remained unchanged. Much the same result occurred in the annual comparison, as total nonfarm payroll gained 500 jobs. The goods-producing sector declined significantly by 1,600 jobs, with manufacturing and construction declining by 1,100 and 500 jobs respectively. The majority of the job losses in manufacturing occurred in the nondurables sector (-800). Annually, the service-producing industries in WIA 7 helped to offset some of the heavy job losses in manufacturing and construction. Services increased significantly by 1,100 jobs, while total government experienced an increase of 700 jobs, primarily at the local government level (+500). Trade advanced 300, while finance, insurance and real estate added 100 jobs over the year.

**Unemployment:** Total unemployment declined by 300 jobless during December 2002 in WIA 7. The area unemployment rate declined by three-tenths of a percentage point to 4.4 percent of the civilian labor force. Total unemployment increased 700 in the year-ago comparison, with the rate advancing from 3.6 percent to the current 4.4 percent.

Labor Force Data	Prelim. Dec. 2002	Rev. Nov. 2002	Rev. Dec. 2001
<i>In Thousands Not Seasonally Adjusted</i>			
Civilian Labor Force	105.3	104.7	108.3
Employment	100.7	99.9	104.4
Unemployment	4.6	4.9	3.9
Unemployment Rate	4.4	4.7	3.6

**Workforce  
Investment  
Region 7**



### Nonfarm Payroll Employment

*In Thousands, Not Seasonally Adjusted*

	Prelim. Dec. 2002	Rev. Nov. 2002	Rev. Dec. 2001
Total Nonfarm Payroll	70.0	69.6	69.5
Private Sector	53.9	53.4	54.1
Goods-Producing	14.5	14.7	16.1
Mining	0.5	0.5	0.5
Coal Mining	0.1	0.1	0.1
Construction	3.0	3.0	3.5
Manufacturing	11.1	11.2	12.2
Durable Goods	5.0	5.0	5.2
Nondurable Goods	6.1	6.1	6.9
Service-Producing	55.4	54.9	53.4
Transportation & Public Utilities	2.8	2.8	2.8
Trade	15.0	15.1	14.7
Finance, Insurance & Real Estate	2.1	2.1	2.0
Services	19.5	18.8	18.4
Government	16.1	16.2	15.4
Federal	4.2	4.2	4.2
State	3.0	3.1	2.8
Local	8.9	8.9	8.4
Labor-Management Dispute Status	0.0	0.0	0.0

*Numbers may not add due to rounding.*

## SELECTED DATA

		<i>Prelim. Dec. 2002</i>	<i>Rev. Nov. 2002</i>	<i>Prelim. Dec. 2001</i>	
<b>Steubenville-Weirton MSA</b>	Civilian Labor Force	53,800	54,500	56,000	Includes Brooke and Hancock Counties, WV and Jefferson County, OH. Data courtesy of Ohio Bureau of Employment Services
	Total Employment	51,500	52,100	53,200	
	Total Unemployment	2,200	2,400	2,700	
	Unemployment Rate	4.2	4.4	4.9	
<b>Cumberland MSA</b>	Civilian Labor Force	44,600	43,800	44,500	Includes Mineral County, WV and Allegany County, MD. Data courtesy of Maryland Department of Economic & Employment Development
	Total Employment	42,000	41,400	41,800	
	Total Unemployment	2,600	2,400	2,700	
	Unemployment Rate	5.8	5.5	6.1	
<b>Washington, DC-MD-VA-WV PMSA</b>	Civilian Labor Force	2,767,400	2,790,300	2,729,900	Includes Washington, DC, portions of Virginia and Maryland, and Berkeley and Jefferson Counties, WV. Data courtesy of District of Columbia Department of Employment Services
	Total Employment	2,681,200	2,699,500	2,633,400	
	Total Unemployment	86,200	90,800	96,500	
	Unemployment Rate	3.1	3.3	3.5	

<b>Unemployment Compensation</b>	<b>Selected Claims Activities</b>	<i>Dec.</i>	<i>Nov.</i>	<i>Dec.</i>	<i>Percent Change:</i>	
		<i>2002</i>	<i>2002</i>	<i>2001</i>	<i>Nov. 2002</i>	<i>Dec. 2001</i>
	Initial Claims	11,709	7,569	8,463	54.7	38.4
	Weeks Claimed	100,465	64,968	63,770	54.6	57.5
	Benefits Paid	\$16,990,572	\$11,074,433	\$10,421,931	53.4	63.0
	Weeks Compensated	82,002	53,587	52,806	53.0	55.3
	Average Weekly Payment	\$207.20	\$206.66	\$197.36	0.3	5.0
	Trust Fund Balance	\$257,054,930	\$269,221,957	\$239,569,329	-4.5	7.3

<b>Workers' Compensation</b>	<b>December 2002 Selected Claims Activities</b>	Regular	Self	<b>Total</b>
		<b>Subscribers*</b>	<b>Insurers*</b>	
	Temporary Disability Benefits Paid	15,404,520	2,817,330	18,221,849
	Medical Benefits Paid	17,252,023	966,583	18,218,606
	Permanent Partial Disability Benefits Paid	10,245,270	2,996,454	13,241,724
	Permanent Total Disability Benefits Paid	15,259,467	1,813,639	17,073,106
	Benefits Paid to Dependents of Fatalities	2,869,266	1,379,424	4,248,690
	Temporary Partial Disability Benefits Paid	106,650	28,720	135,370
	Settlement Benefits Paid	1,235,902	257,651	1,493,553
	DWRF ** Permanent Total Disability Benefits Paid	405,102	0	405,102
	DWRF ** Benefits Paid to Dependents of Fatalities	629,034	0	629,034
	DWRF ** Permanent Partial Disability Benefits Paid	0	0	0
	<b>Sum All Benefits Paid</b>	<b>63,407,233</b>	<b>10,259,801</b>	<b>73,667,034</b>

\* Unadjusted: Current Benefits Do Not Reflect Credits

\*\* Disabled Workers' Relief Fund provides benefits to meet the weekly minimum benefit payable for worker's injured prior to July 1, 1971.

## BUREAU OF EMPLOYMENT PROGRAMS OFFICES

<i>office</i>	<i>street address</i>	<i>city &amp; zip</i>	<i>phone</i>
Beckley	201 Grey Flats Road	Beckley 25802-1206	304-256-6792
Charleston	1321 Plaza East	Charleston 25325-1349	558-0342
Huntington	800 8th Street	Huntington 25713-0970	528-5525
Fairmont	109 Adams Street	Fairmont 26555-1468	363-5550
Martinsburg	Berkeley Plaza Center	Martinsburg 25401-0905	267-0030
Parkersburg	300 Lakeview Center	Parkersburg 26102-0658	420-4525
Wheeling	887 National Road	Wheeling 26003-0702	238-1045

**Work4WV  
Career  
Centers**

Clarksburg	153 W. Main Street	Clarksburg 26302-1960	627-2125
Elkins	1 Pleasant Avenue	Elkins 26241-3626	637-0255
Greenbrier Valley	21 Red Oaks Shopping Center	Ronceverte 24970-1348	647-7415
Logan	214 Dingess Street	Logan 25601-1860	792-7010
Mercer County	195 Davis Street	Princeton, WV 24740-2446	487-2248
Moorefield	608C North Main Street	Moorefield 26836-1081	538-7741
Morgantown	304 Scott Avenue	Morgantown 26505-8804	285-3120
New Martinsville	249 Clark Street	New Martinsville 26155-0430	455-0902
Point Pleasant	225 Sixth Street	Point Pleasant 25550-0039	675-0857
Putnam	4237C State Route 34	Hurricane 25526-9788	757-7270
Summersville	812 Northside Drive	Summersville 26651-0673	872-0820
Weirton	217 Three Springs Drive	Weirton 26062-1447	723-5752
Welch	20 McDowell Street	Welch 24801-0918	436-3131
Williamson	120 W First Avenue	Williamson 25661-0010	235-6012

**Job  
Service  
Offices**

<i>office</i>	<i>street address</i>	<i>city &amp; zip</i>	<i>phone</i>
Beckley	201 Grey Flats Road	Beckley 25802-1577	304-256-6796
Charleston	1321 Plaza East	Charleston 25330-2753	558-0291
Clarksburg	153 W. Main Street	Clarksburg 26302-1960	627-2120
Elkins	1 Pleasant Avenue	Elkins 26241-3626	637-0257
Fairmont	109 Adams Street	Fairmont 26554-1468	363-0654
Greenbrier Valley	20 Red Oaks Shopping Center	Ronceverte 24970-1348	647-7410
Huntington	734 Fourth Avenue	Huntington 25717-1640	528-5538
Logan	212 Dingess Street	Logan 25601-1619	792-7020
Martinsburg	Berkeley Plaza Center	Martinsburg 25401-0905	267-0065
Mercer County	195 Davis Street	Princeton, WV 24740-2446	425-1896
Moorefield	608C North Main Street	Moorefield 26836-0350	538-3178
Morgantown	304 Scott Avenue	Morgantown 26505-8804	285-3124
New Martinsville	249 Clark Street	New Martinsville 26155-0430	455-0904
Parkersburg	300 Lakeview Center	Parkersburg 26101-0658	420-4625
Point Pleasant	225 Sixth Street	Point Pleasant 25550-0039	675-0873
Summersville	806 Broad Street	Summersville 26651-0100	872-0821
Weirton	217 Three Springs Drive	Weirton 26062-1447	723-1117
Welch	20 McDowell Street	Welch 24801-1689	436-2527
Wheeling	887 National Road	Wheeling 26003-0737	238-1035
Williamson	120 W First Avenue	Williamson 25661-0010	235-6017

**Unemployment  
Compensation  
Offices**

Construction	304-926-5077	Manufacturing & Timber	926-5488
Entertainment & Services I	926-5281	Metals/Chemicals & Utilities	926-2078
Entertainment & Services II	926-5480	Mining I	926-5406
Government Non-Educational	926-5173	Mining II	926-5171
Government Education/Clerical	926-2086	Retail I	926-5457
Health Care I	926-5413	Retail II	926-5164
Health Care II	926-2067	Trucking/Agriculture & Food Processing	926-5286

**Workers'  
Compensation  
Industry-Based  
Claims Teams**



## Terms used in the Economic Summary

Civilian Labor Force.....	All persons 16 years of age and older (excluding members of the Armed Forces and inmates of institutions) residing within a specific geographic area who are classified as employed, as unemployed and seeking employment, or who are involved in a labor-management dispute.
Consumer Price Index.....	A statistical measure of the changes in prices of goods and services bought by urban wage earners and clerical workers, including families and single persons. It is often called the "cost-of-living index". It measures changes in prices which are the most important cause of changes in the cost of living, but it does not indicate how much families actually spend to defray their living expenses.
Employment, Establishment-Based..	Employment computed by place of work within a specific geographic area, including dual job holders but excluding self-employed, domestics in private households, unpaid family workers, agricultural workers, and persons involved in labor-management disputes.
Employment, Resident-Based.....	Employment computed by place of residence within a specific geographic area, excluding dual job holders but including self-employed, domestics in private households, unpaid family workers, agricultural workers, and persons involved in labor-management disputes.
Labor Force.....	The sum of all civilians classified as employed and unemployed and members of the Armed Forces stationed in the United States.
Metropolitan Statistical Area.....	The general concept of an MSA is one of a large population nucleus, together with adjacent communities which have a high degree of economic and social integration with that nucleus.
Nonfarm Payroll Employment.....	The total number of persons on establishment payrolls employed full or part time who received pay for any part of the pay period which includes the 12th day of the month.
Percapita Personal Income.....	Total personal income divided by the total population.
Seasonally Adjusted.....	The adjustment of time-series data to eliminate the effect of intrayear variations that tend to occur each year in approximately the same manner. Examples of such variations include: school terms, holidays, and weather pattern.
Unemployment Rate.....	Represents the number unemployed as a percent of the civilian labor force.
Work4WV Career Centers.....	Centers coordinate a variety of state agency and local service organizations offices and provide a single access point for career services, job search assistance and other employment related services.
Workforce Investment Area.....	Under provisions of the Workforce Investment Act of 1998, the Governor and the State Workforce Investment Board designate local areas for decision making and service delivery at the local level. West Virginia has seven workforce investment areas.

This publication is produced under an annual labor market information grant from the Employment and Training Administration, U.S. Department of Labor; employment and unemployment data are derived from core statistical programs funded under annual cooperative agreements with the Bureau of Labor Statistics, U. S. Department of Labor. The material contained in this publication is in the public domain and may be reproduced without special permission.

**State of West Virginia  
Bureau of Employment Programs  
Research, Information and Analysis  
112 California Avenue  
Charleston, WV 25305-0112**

**FIRST-CLASS MAIL  
POSTAGE & FEES PAID  
US Department of Labor  
Permit No. G-12  
S N G L P**

### RETURN SERVICE REQUESTED

- If any part of your address has changed, please mark corrections on this page and return it to the above address.
- If you do not wish to continue receiving this publication, please check here , and return this cover to the above address or contact us at [LMI@WVBEP.ORG](mailto:LMI@WVBEP.ORG).

